



Regional Strategic Environmental Assessment Update for the Northeast Roundtable June 24, 2020

Chris Pasztor
Executive Director
Tenure and Geoscience Branch
Ministry of Energy, Mines and Petroleum Resources

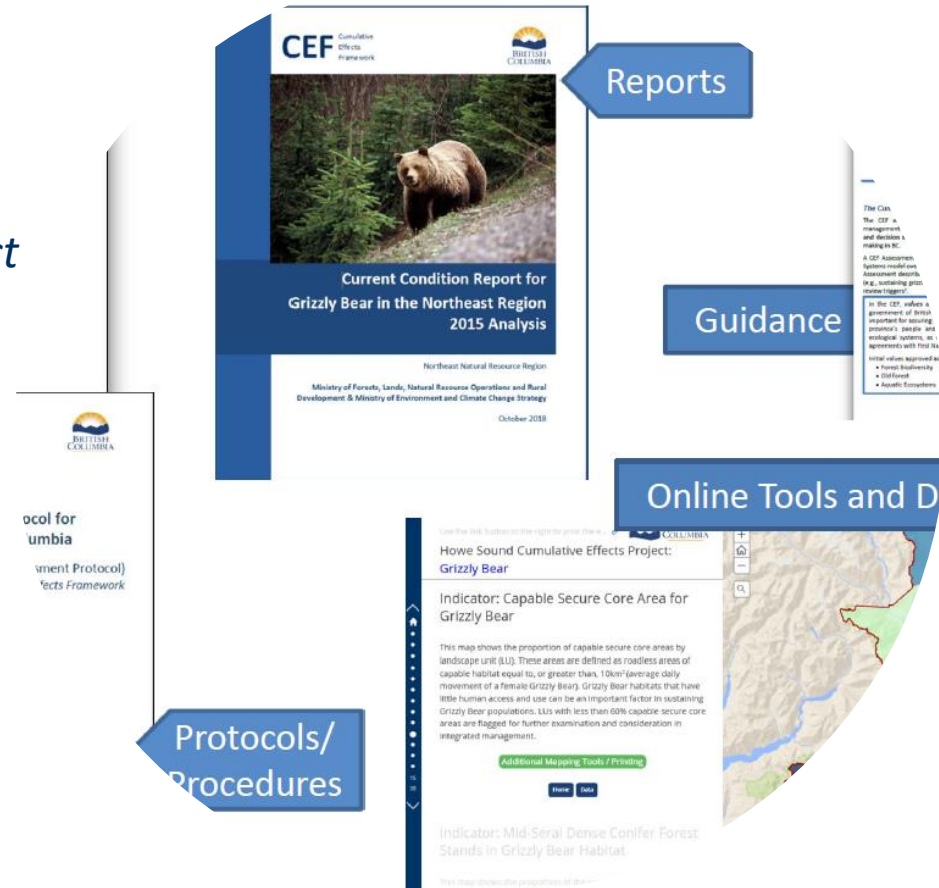
Cumulative Effects Framework

Cumulative Effects:

Changes to environmental, social and economic values caused by the combined effect of past, present and potential future human activities and natural processes

Values:

The things that the people and government of British Columbia care about and see as important for assuring the integrity and well-being of the province's people and communities, economies and ecological systems, defined in policy, legislation or agreements with First Nations.



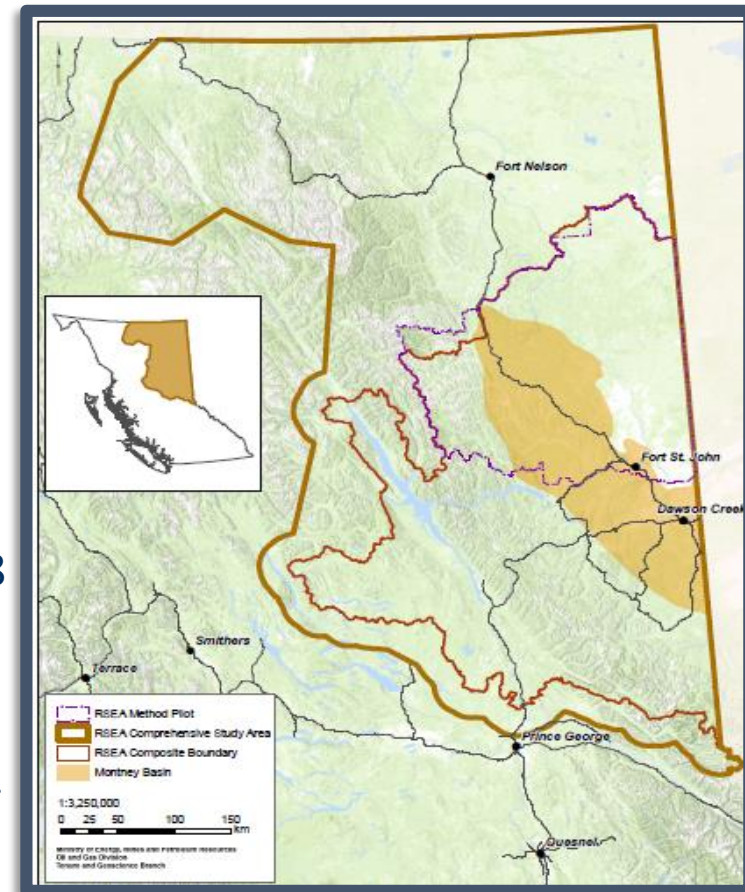
Incorporates the combined effects of all activities and natural processes into decision-making

Regional Strategic Environmental Assessment

Goal - design a regional specific/strategic environmental Assessment.

Objectives:

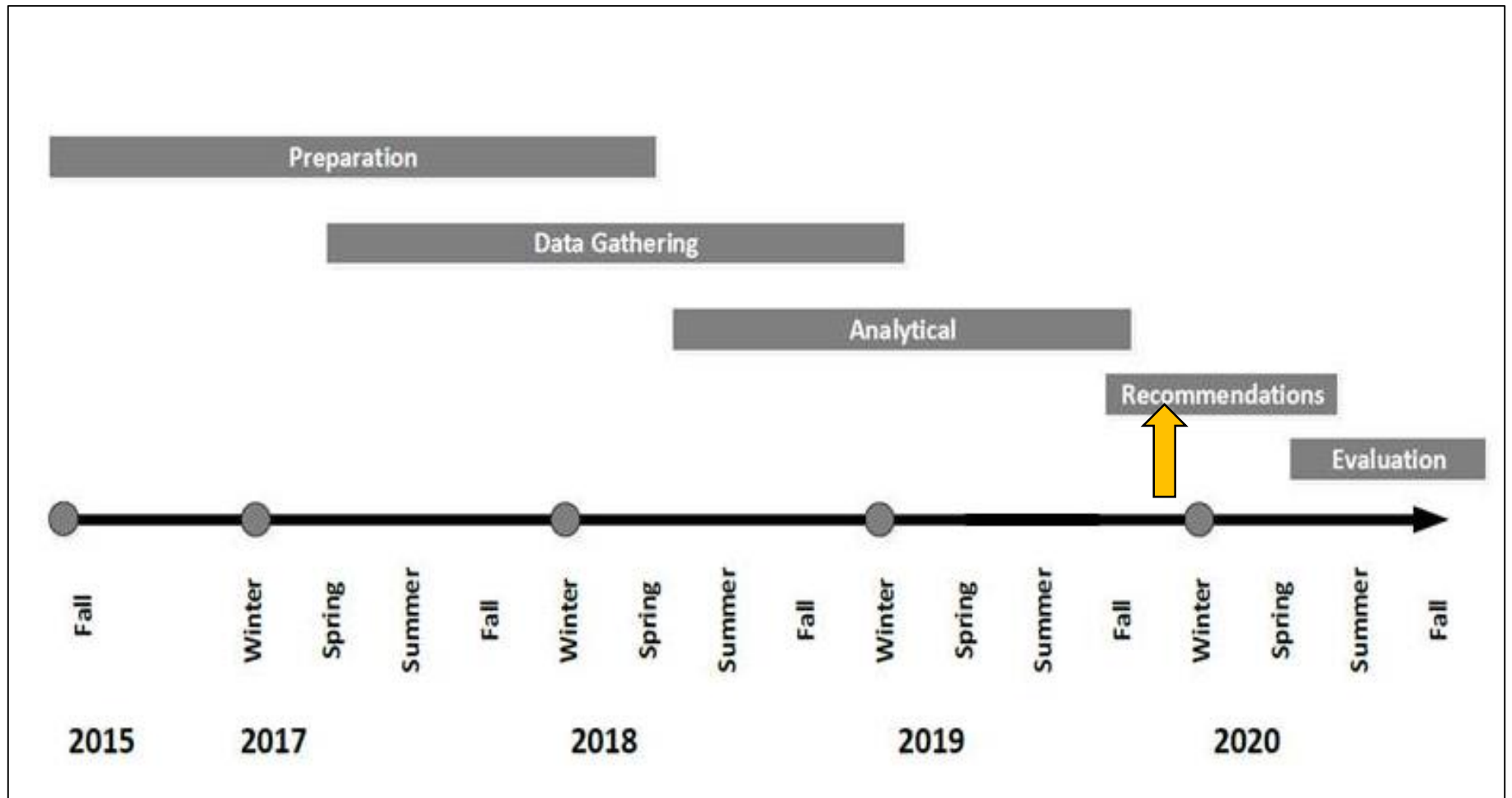
- Create a study area;
- Credibly assess the effects of natural resource development on the rights of Participating Treaty 8 First Nations
- Use the results of the assessment to inform management responses to optimize the interest of the parties.



Key element - to inform and be informed by the Provincial Cumulative Effects Framework

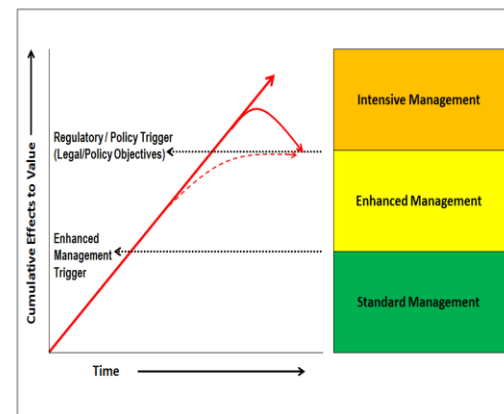
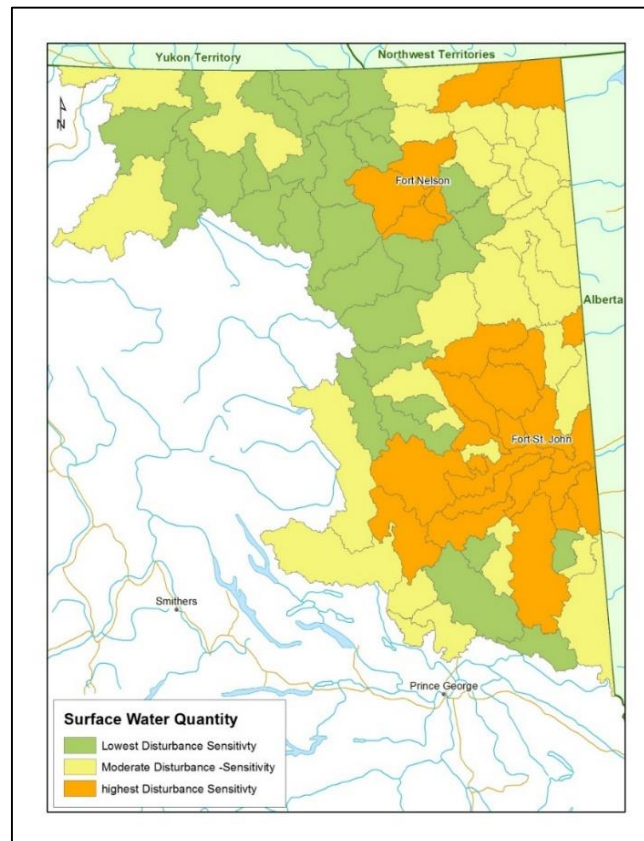
RSEA and Values

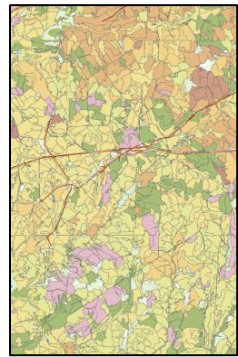




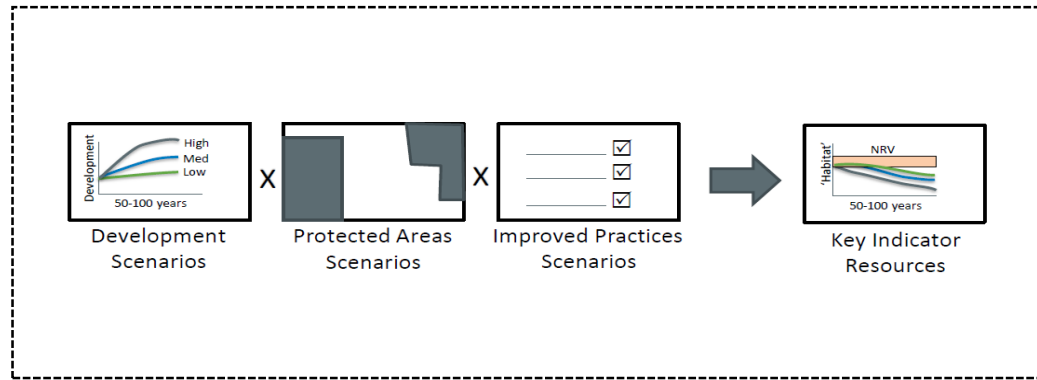
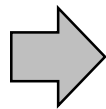
Assessing Current Condition of Values

- Assess current condition of valued components and associated indicators
- Indicators are compared to baseline information (e.g., policy)
- Identifies areas (units) that may require change in management

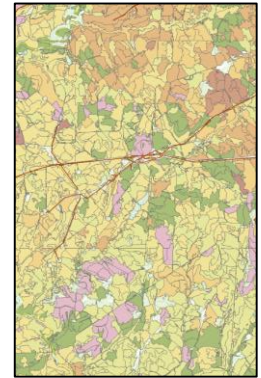
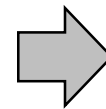




Current
Condition

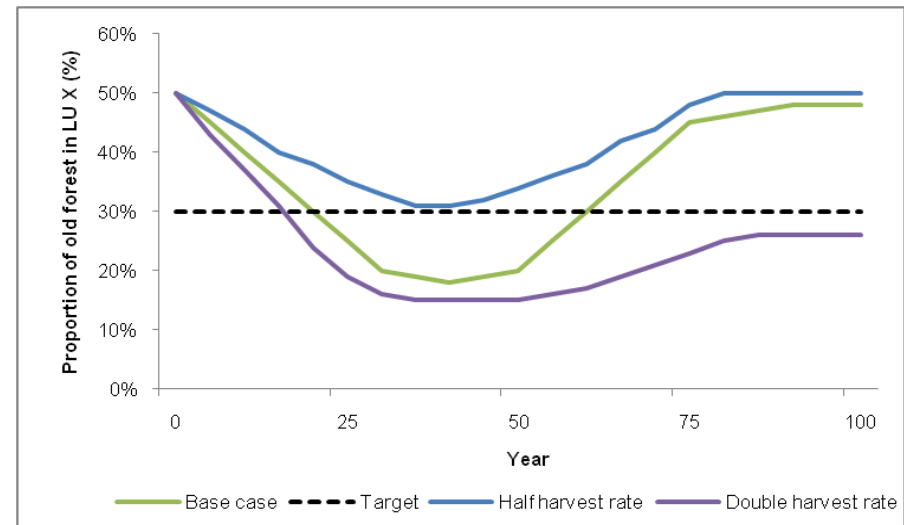


Modeling Framework - Scenario Development



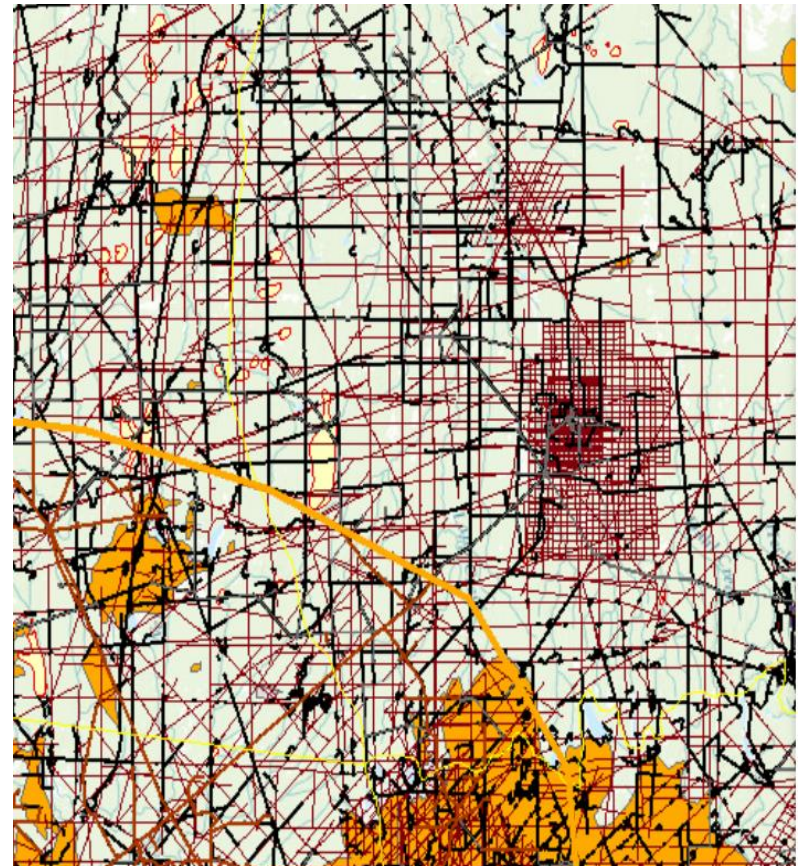
Future Condition

- Use spatially explicit models to predict future state
- Base case - scenarios under forestry and oil and gas development – combined footprint
- Alternative scenarios – change base case to improve conditions if necessary



Current Condition - Disturbance Layer

- Combined (all activities) disturbance footprint;
- The disturbance footprint is the foundation for determining certain effects on values and efficacy of proposed management if necessary;
- A consistent approach to support landscape level mapping, reporting, decision making or further analysis.
- Work is complete.



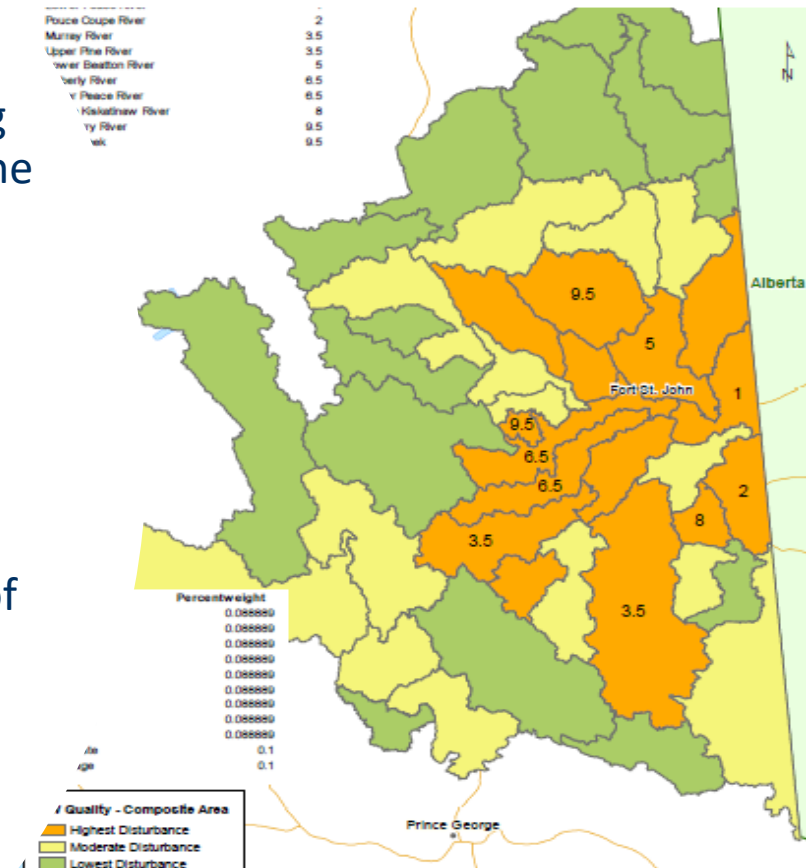
Current Condition – Moose

- Analysis to determine current condition of moose population and quantity and quality of moose habitat.
- What are the issues and do we need to consider new management strategies to address them ?
- What are the preferred places for First Nations to obtain a 'goodly supply' of moose?
- Work in progress.



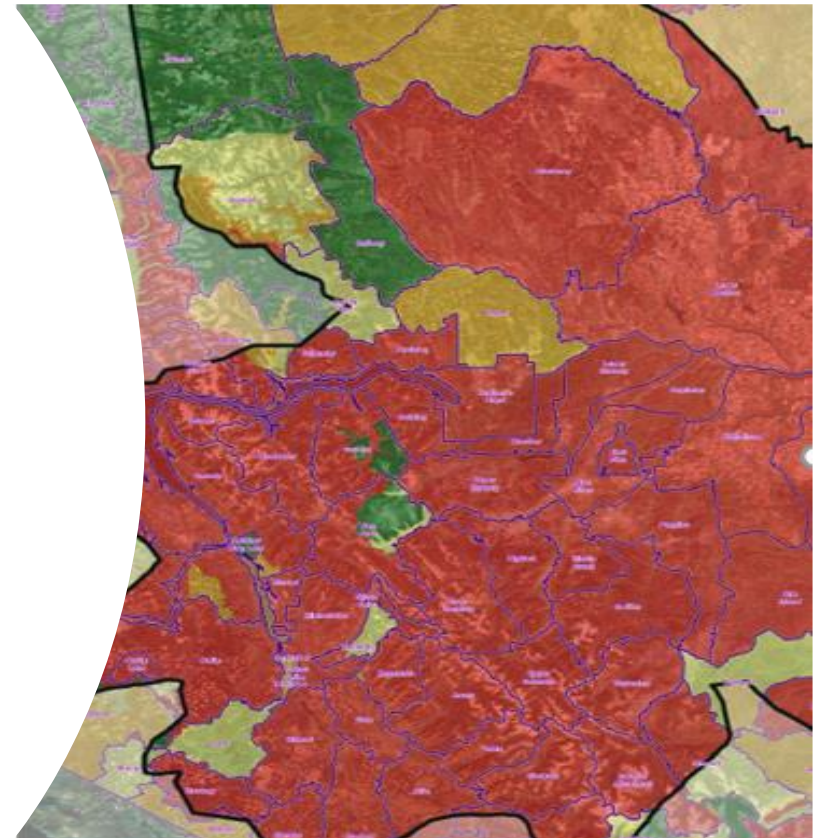
Current Condition - Surface Water Quantity and Quality

- Current condition of watersheds – to assess ecosystem health and biodiversity while providing opportunities to undertake traditional uses and the meaningful practice of treaty rights.
- Prioritizing watersheds by: level of disturbance, ecosystem health and ecological sensitivity, and First Nations values.
- Phase 2 (work in progress): detailed assessment of the priority watersheds to identify management responses that would maintain or reduce risk to watersheds.
- Work in progress.



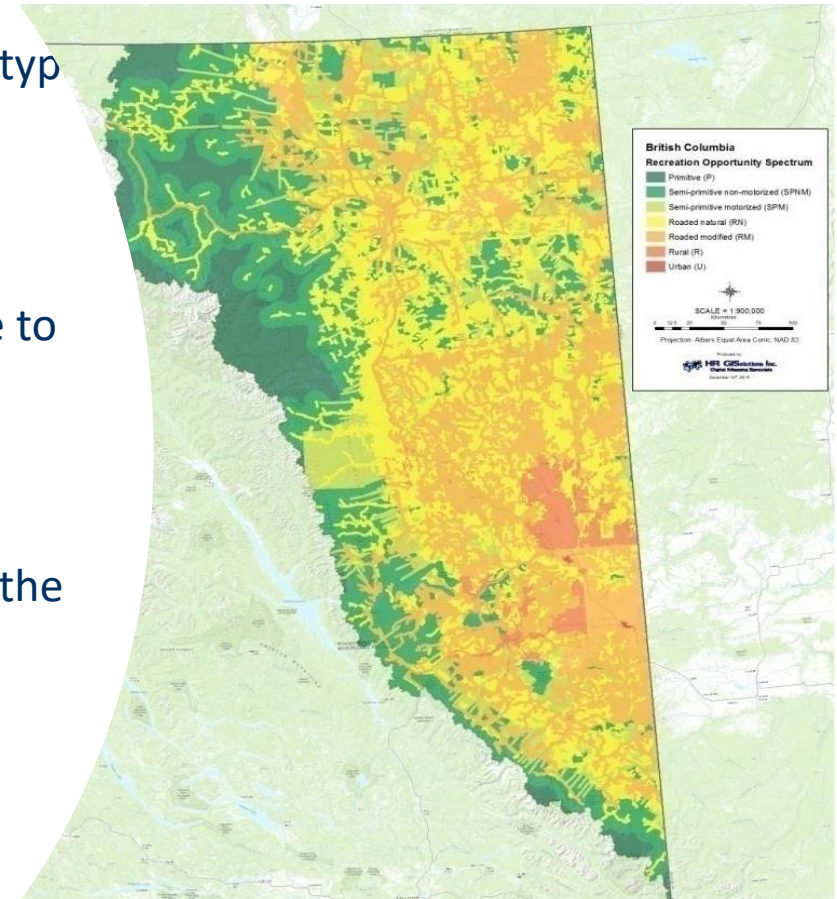
Current Condition – Biodiversity/Old Forest

- An approach for an assessment of biodiversity
- Analysis of current condition and functional analysis of old forest compared to historic natural range of variability;
- Draft current condition and old Forest functional analysis completed;
- Work in progress.



Current Condition - Peaceful Enjoyment

- Peaceful Enjoyment: a value that reflects the type of experience a person can have on the land;
- This experience affects whether, and to what extent, a First Nation community *may* be able to meaningfully exercise Treaty Rights without unreasonable interference;
- Used a recreational opportunity spectrum as the basis to articulate peaceful enjoyment;
- Work still in progress.



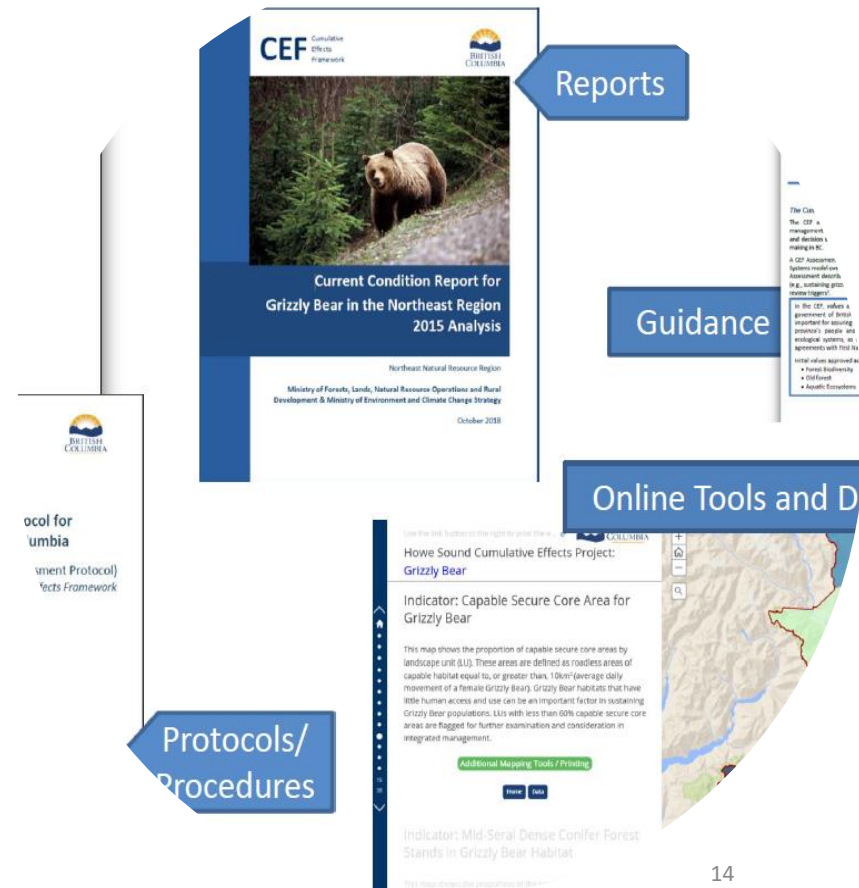
Current Condition - Environmental Livelihoods and Traditional Use

- Understanding traditional food harvest and food networks to help understand potential impacts to Treaty rights;
- A combination of ecological and socio-cultural indicators;
- Work in progress.



Product Summary

- Values being assessed:
 - Moose
 - Biodiversity/Old Forest
 - Water
 - Peaceful Enjoyment
 - Environmental Livelihoods
- To inform and be informed by the Provincial Cumulative Effects Framework;
- Current condition reports articulating the current condition of values and their associated risks, e.g., Grizzly Bear Current Condition Report;



Next Steps

- Continue to assess values and complete modelling work;
- Understand and identify management recommendations and linkages to Fort St. John LRMP process;
- Provide opportunities for local government and stakeholder input and engagement;



Thank You

Questions?