

# Regional Strategic Environmental Assessment

---



Chris Pasztor  
Executive Director  
Tenure and Geoscience Branch  
Ministry of Energy, Mines and Low Carbon Innovation

# Regional Strategic Environmental Assessment

- A collaborative process between the Province and seven Treaty 8 First Nation to conduct a cumulative effects assessment in northeast BC.
- Aligning and advancing shared interest between the Province and Treaty 8 First Nations in northeast BC.
- Not a project impact assessment, e.g., EAO process.
- Regional scale process to ensure environmental, cultural, social and economic values are used to drive policy, planning and programs.
- Decision support tool to emphasize economic, environmental and cultural sustainability.

# Cumulative Effects Framework

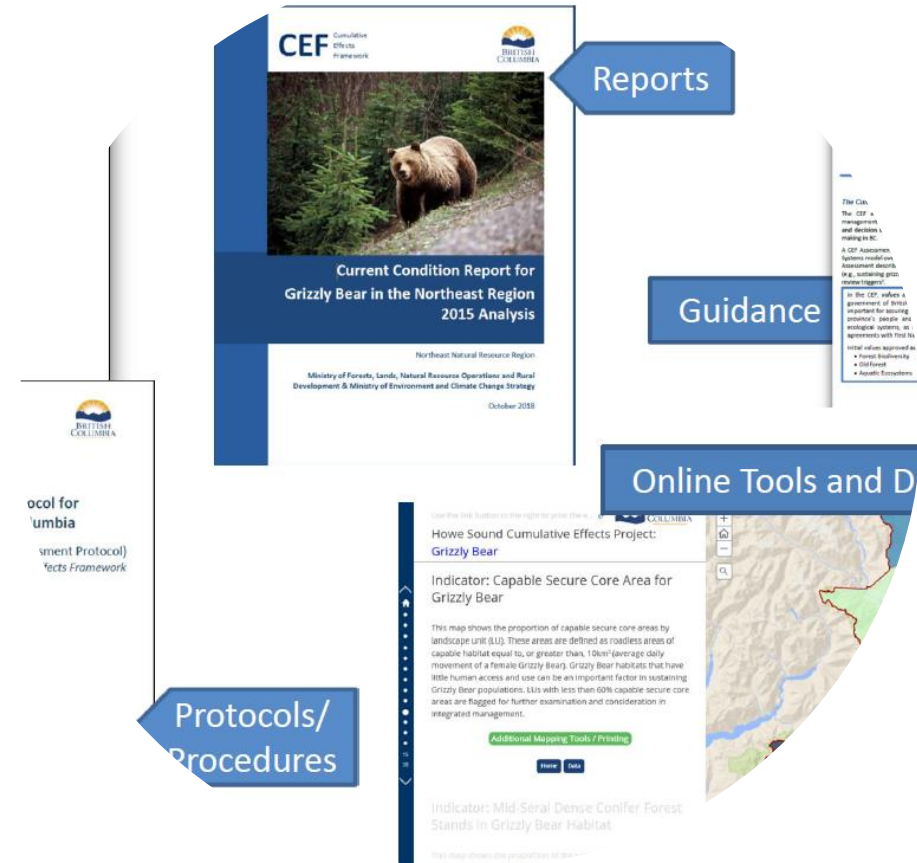
## **Cumulative Effects:**

*Changes to environmental, social and economic values caused by the combined effect of past, present and potential future human activities and natural processes*

## **Values:**

*The things that the people and government of British Columbia care about and see as important for assuring the integrity and well-being of the province's people and communities, economies and ecological systems, defined in policy, legislation or agreements with First Nations.*

- Incorporates the combined effects of all activities and natural processes into decision-making



<https://www2.gov.bc.ca/gov/content/environment/natural-resource-stewardship/cumulative-effects-framework>

# Assessment - Current Condition

## Step 1

Biodiversity/Old Forest

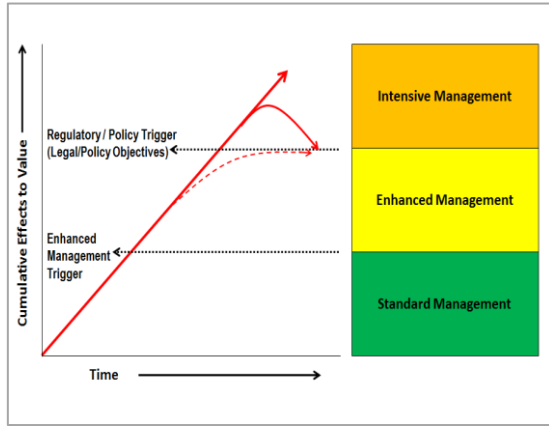
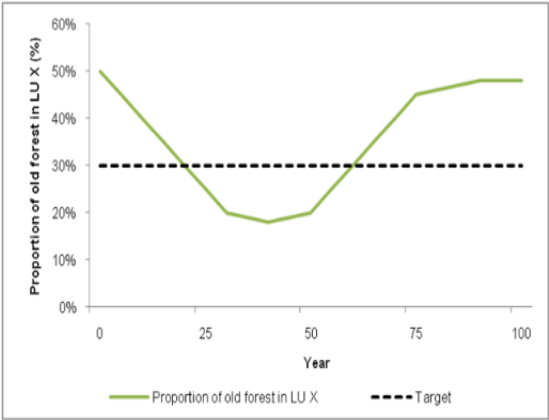
Water Quantity and Quality

Moose and Moose Habitat

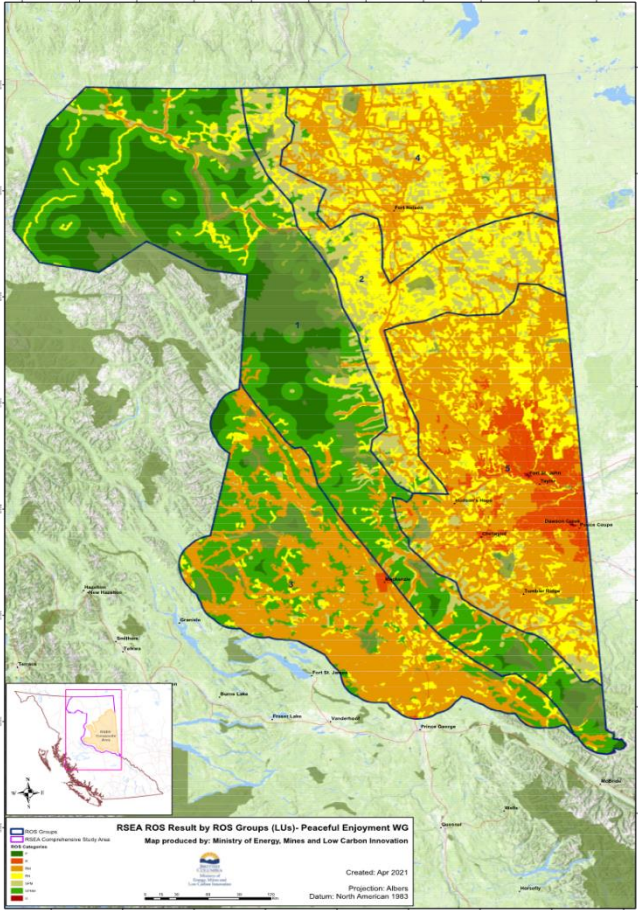
Peaceful Enjoyment

Environmental Livelihoods

## Step 2



## Step 3



# Initial Findings

- Areas of cultural significance can focus issues, interests and solutions.
- Most values are below policy thresholds and natural ranges of acceptability.
- Restoration will be a key factor in improving value outcomes.
- A cumulative effects management strategy that has a combination of resource development constraints, restoration activities and improved practices to minimize the industrial footprint is likely to produce the greatest return on investment for all parties.

# Next Steps

- Complete current condition reports and recommendations.
- Report out on current condition assessments and recommendations.
- Look for opportunities to engage industry, stakeholders and interested parties through existing forms (e.g., land use planning processes).



Thank You

