

A large male caribou with impressive, multi-tined antlers stands in a field of low-lying vegetation. The caribou is facing left, and its body is a mix of brown and grey tones. The background is a clear, bright blue sky. The text is overlaid on the image in white, bold font.

Draft Boreal Caribou Protection & Recovery Plan

Initial Public Engagement Session #3

**Presented by Chris Cooper & Michael Huck
February 16th, 2022**

Purpose of Public Engagement

“to present the draft recovery scenario, answer all questions and gather public input to inform further revisions of the BCPRP.”

Draft recovery scenario developed through collaborative effort:

1. Technical Planning Phase - Fort Nelson First Nation (FNFN) & Ministry of Forests, Lands, Natural Resource Operations and Rural Development (FLNR)
2. Strategic Planning Phase – including Northern Rockies Regional Municipality (NRRM)

Draft Recovery Scenario based on:

- Status of Boreal herds: Calendar, Snake-Sahtahneh, Maxhamish & Westside Fort Nelson
- Threats to Remaining Populations
- Expectations of First Nations, Communities & Governments
- Consideration of Industry Needs & the Viability of Investment Opportunities
- Socio-Economic Effects
- Effectiveness of Support Tools

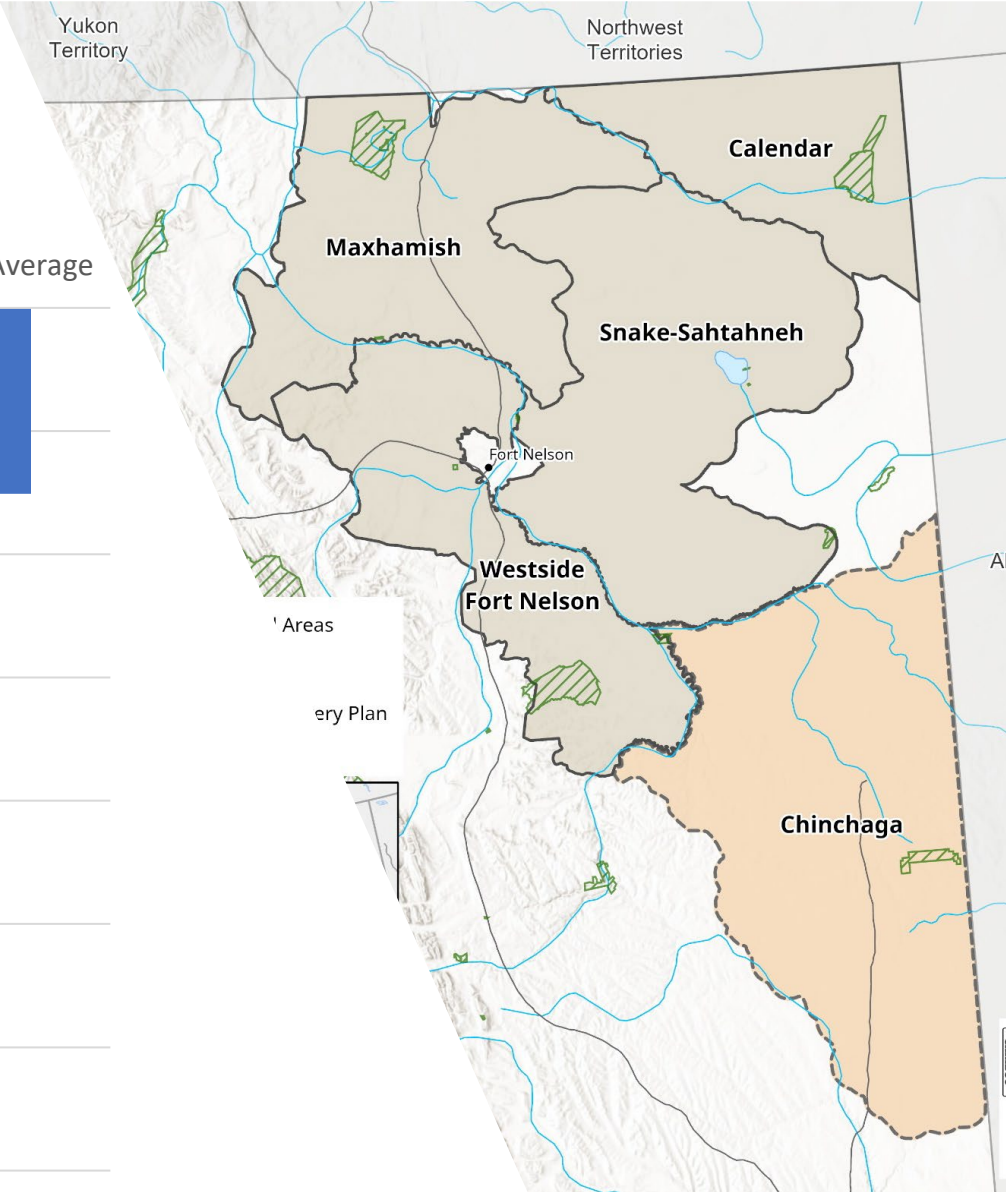
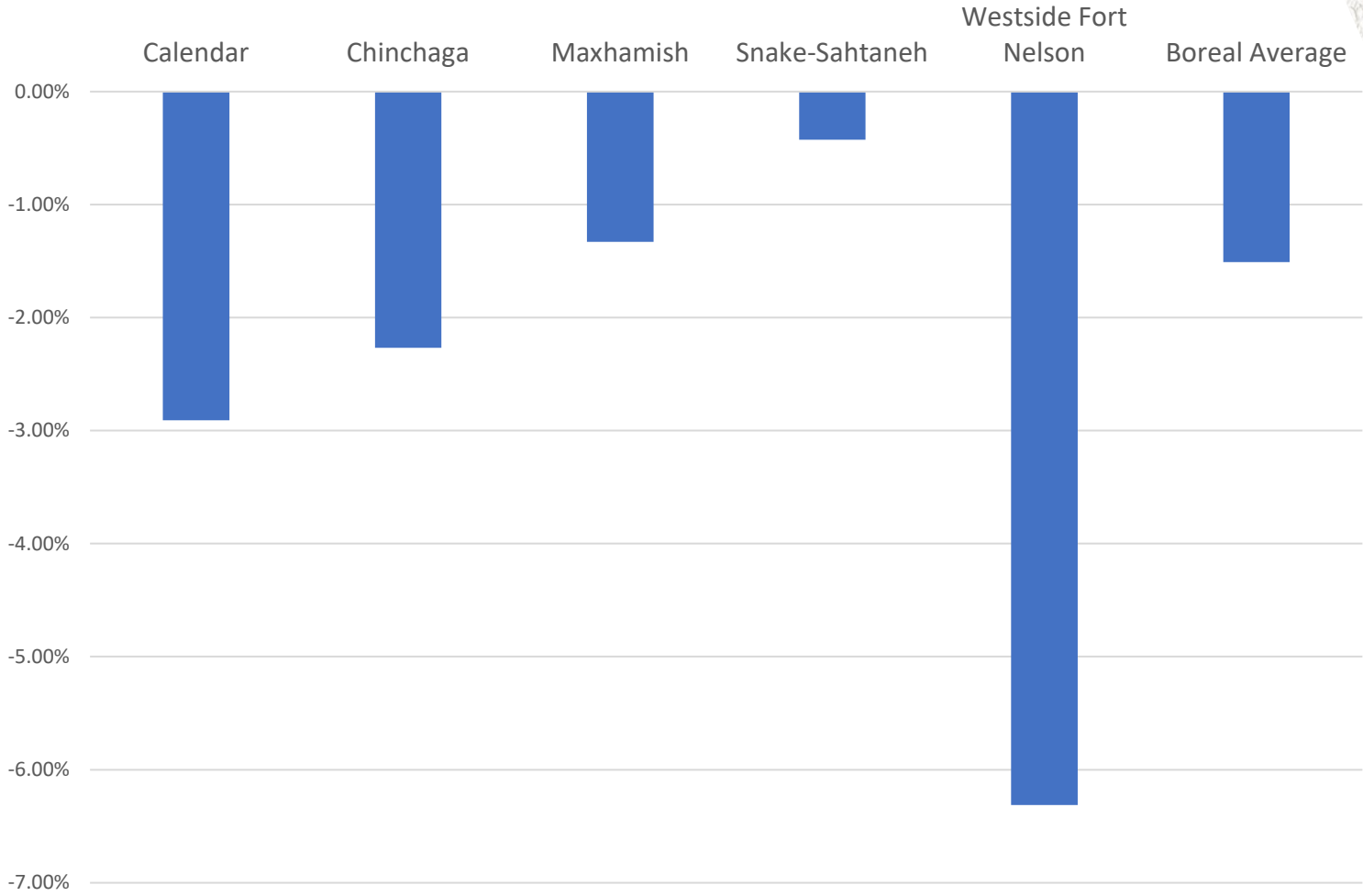


Boreal Herd Status

- Boreal Caribou reside in the large peatland complexes of the northeastern corner of the province
- Indigenous knowledge & local observations suggests decline over the last 30 years
- Population monitoring indicate decline since early 2000s
- Conservation Status:
 - Red Listed (S2) imperiled by British Columbia
 - Threatened on Schedule 1 of the *Species at Risk Act*



Average Growth Rates for Boreal Herds (2014-2021)



A warmer climate generates more fires

Logging requires roads and removes old forest

Gas exploration and development creates linear features and clears land



1/ Regenerating forests provide abundant forage; moose, deer and elk expand north as climate warms



2/ Wolf populations increase with abundant prey



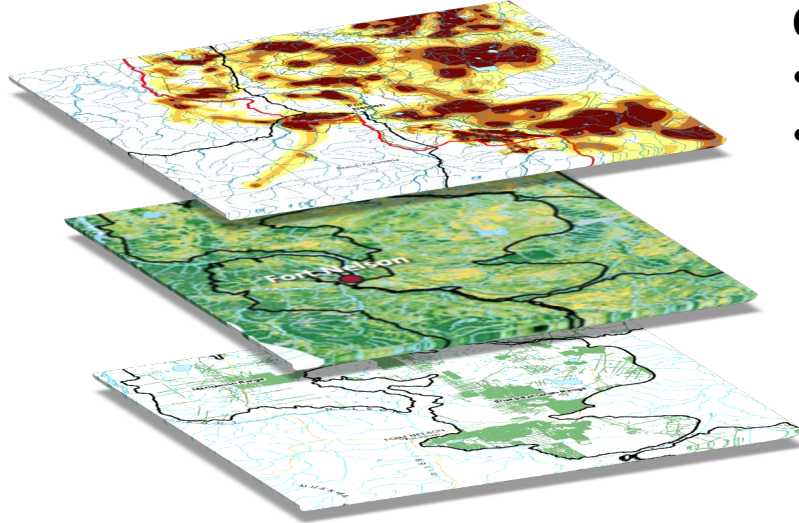
3/ Seismic lines, pipelines and roads create travel corridors for wolves and increase their hunting efficiency



4/ Wolves encounter caribou more often; caribou populations decline



Delineate Core Habitat



Technical Planning Phase

Caribou Use:

- FNFN Indigenous Knowledge & Local Observations
- BC & Alberta Telemetry

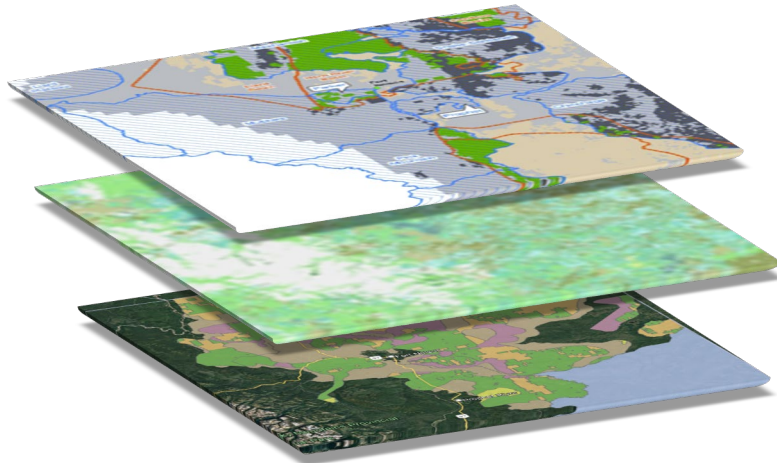
Habitat Suitability:

- Enhanced Wetland Data converted to Habitat Suitability

Disturbance:

- Regional Strategic Environmental Assessment (RSEA) Dataset
- Linear Features & Areal Disturbance

Initial Industry Assessment



Petroleum and Natural Gas:

- Conventional and Non Conventional Tenure
- Existing Liabilities

Forestry:

- Timber Harvesting Land Base (THLB)
- Merchantability

Economic & Cultural Values Assessments

- Resource Forecasts, FNFN Land Stewardship Framework

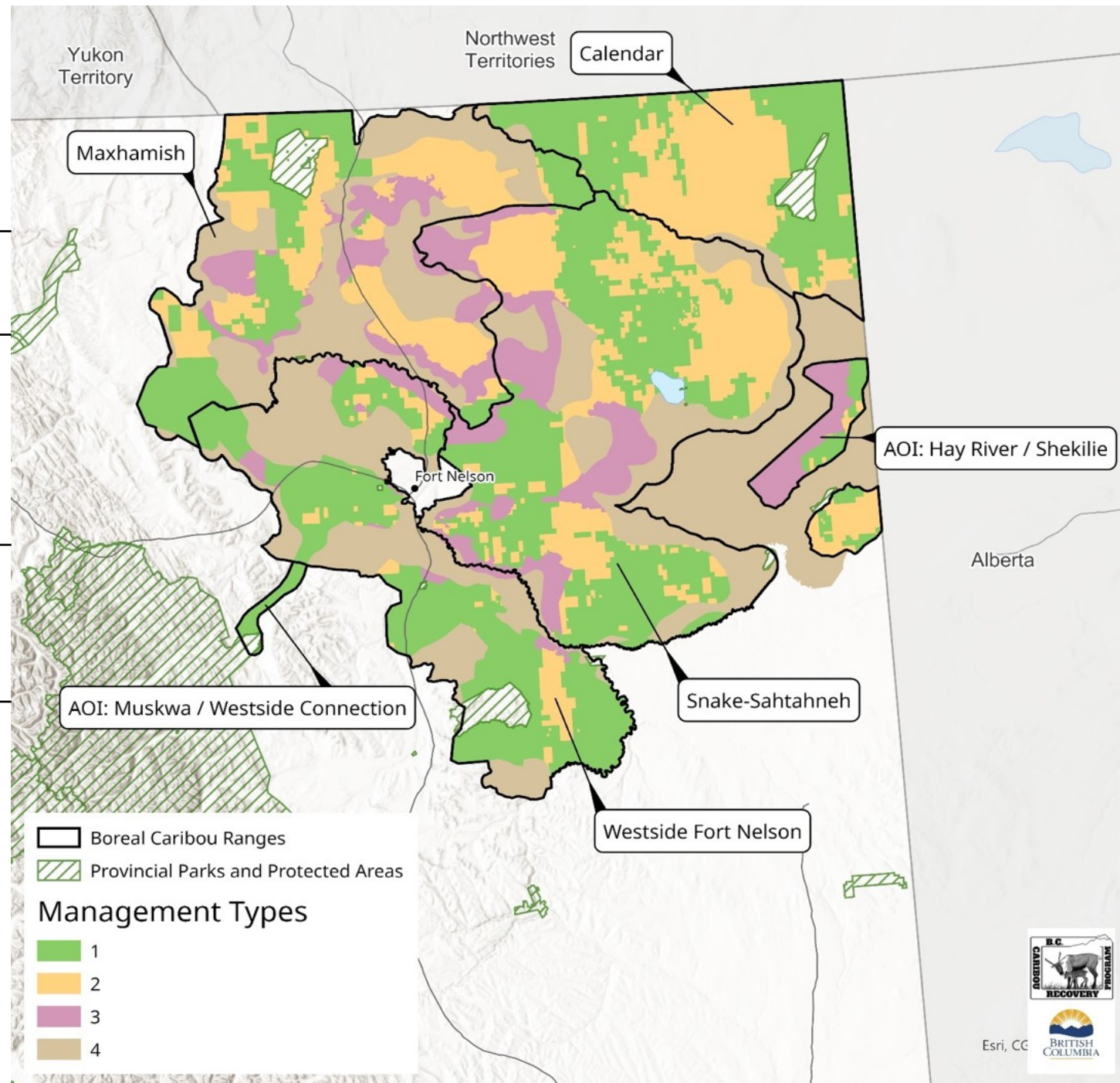
Strategic Planning Phase

- a) Review overlaps with THLB & potential impacts to Allowable Annual Cut (AAC)
- b) Consideration of existing forestry investment opportunities (OSB, Pellets, Specialty Products)
- c) Industrial Forestry Services report on stand volumes, leading species, cycle times
- d) Consideration of commercial scale forestry requirements (volumes, species, products, scale)
- e) Ongoing forest sector engagement on targeted economic fibre supply
- f) Ministry of Energy, Mines & Petroleum Resources and the Oil & Gas Commission industry forecasts
- g) Development of management intents for industry to promote positive habitat trends
- h) Draft Recovery Scenario to:
 - i. Attain moderate to high probability of achieving self-sustaining populations over time
 - ii. Ensure viability of industrial investment opportunities

Draft Recovery Scenario

Type Management Intent

1	<ul style="list-style-type: none"> • Full restrictions across all industries • Top restoration priority
2	<ul style="list-style-type: none"> • Restricted from forest harvest • Conditional petroleum and natural gas development • Secondary restoration priority
3	<ul style="list-style-type: none"> • Conditional forest harvest • Conditional petroleum and natural gas • Low restoration priority
4	<ul style="list-style-type: none"> • Conditional forest harvest • Conditional petroleum and natural gas development • Lowest restoration priority



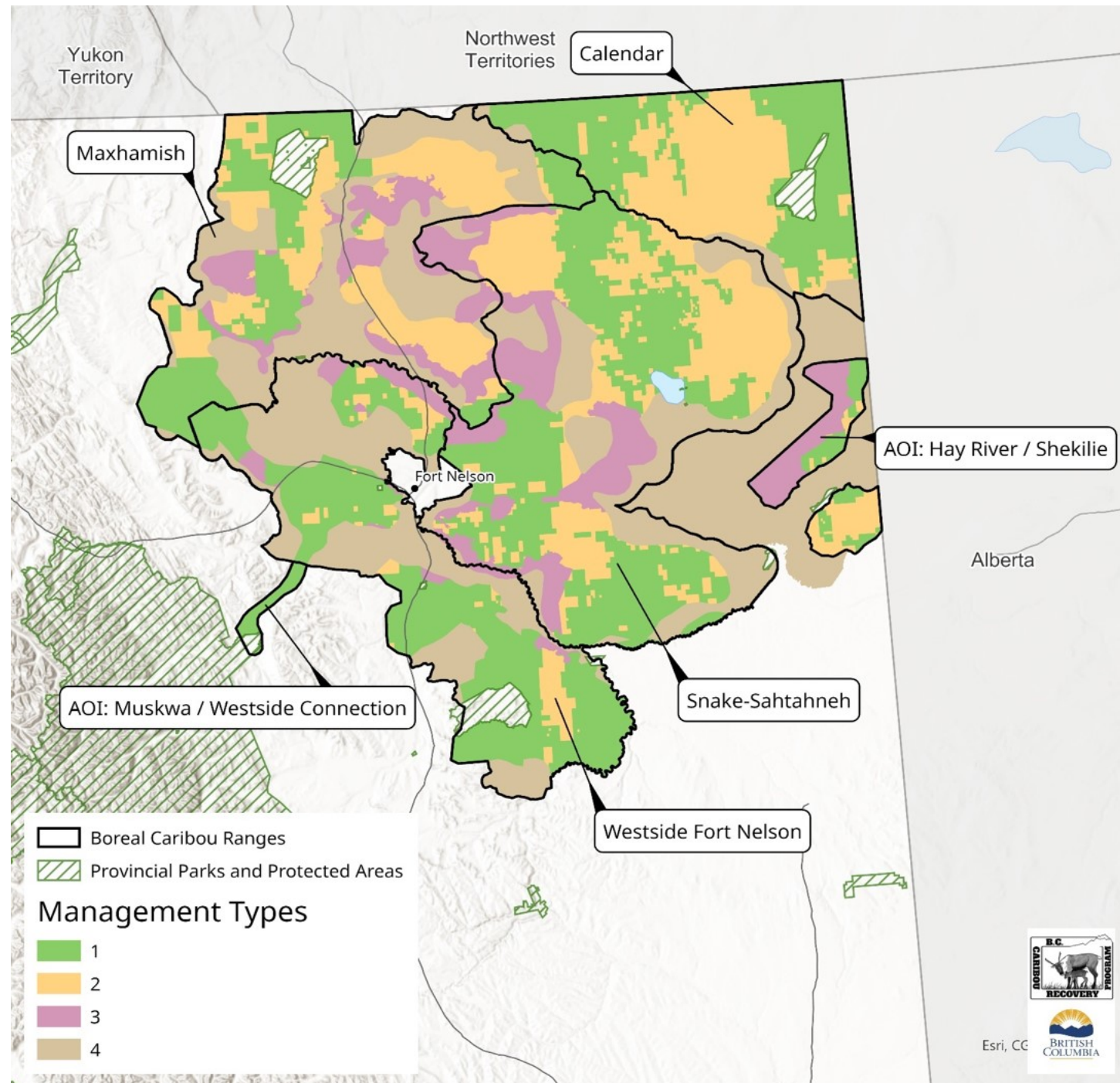
Proposed Implications for Boreal Caribou

Amount of area managed for positive habitat trend increased by 1,656,219 ha

- From 798,263 ha (21%) to 2,454,482 ha (63%)

Achieves a moderate to high likelihood of population self-sustainability

- Individual herd ranges from 52% to 94%
- Core habitat protections from 78 – 100%



Proposed Implications for Forestry

24% reduction in THLB

- From 870,113 ha down to 661,286 ha

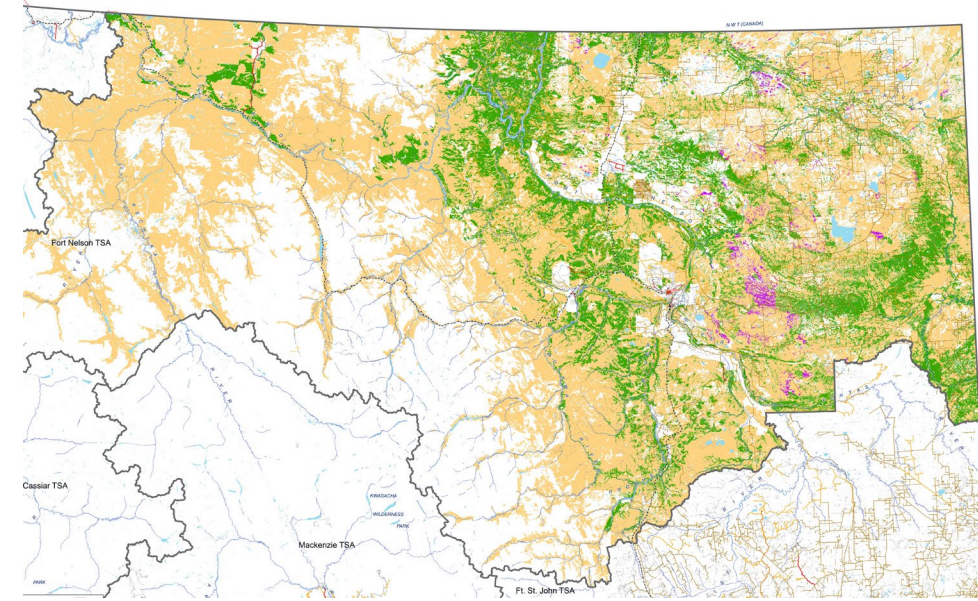
16% reduction to Allowable Annual Cut (AAC)

- From 2,582,350 m³ down to 2,162,350 m³
- Community Forest Agreement (217,000 m³) unaffected

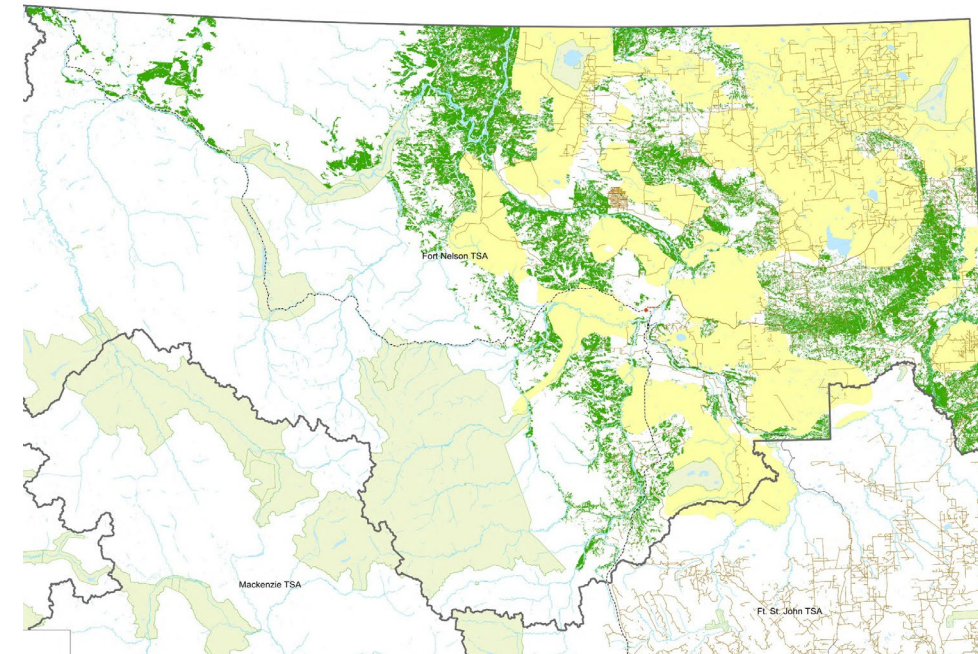
Ensures access to targeted economic fibre supply:

- Stand Volumes & Leading Species
- Site Index & Age Class
- Cycle Times
- Investment Opportunities

Base Case



Recovery Scenario



An aerial photograph of an industrial facility, likely a refinery or chemical plant, situated in a rural area. The facility features numerous buildings, pipes, and a tall smokestack. It is surrounded by a dense forest with trees in various shades of green and yellow, indicating an autumn setting. The sky is clear and blue.

Proposed Implications for Petroleum & Natural Gas

- Maintains conditional access to PNG rights holders
- Places a time-bound moratorium on issuing new tenures
- Requires updated Planning and Operational Measures
- Explore offsets for future PNG disturbance
- Maintains positive habitat trend

Industry Socio-Economic Assessment

Forestry				
Total Available AAC	Potential Employment	Potential Provincial Tax Revenue	Potential Crown Stumpage	Potential GDP
2,379,350 m ³	1132 jobs	\$16,369,928	\$17,845,125	\$187,968,650
Petroleum & Natural Gas				
Herd Range	Range Area (Ha)	Estimated PNG Resource Volume Tenured Locations (Tcf)	Estimated PNG Resource Volume Untenured Locations (Tcf)	Total Estimated PNG Resource Volume (Tcf)
Calendar	558,625	4	0.1	0.2
Chinchaga	1,622,270	7	0.03	0.0
Maxhamish	1,011,989	42	5	9
Snake-Sahtahneh	1,340,416	14	6	12
Westside Fort Nelson	837,147	3	72	114



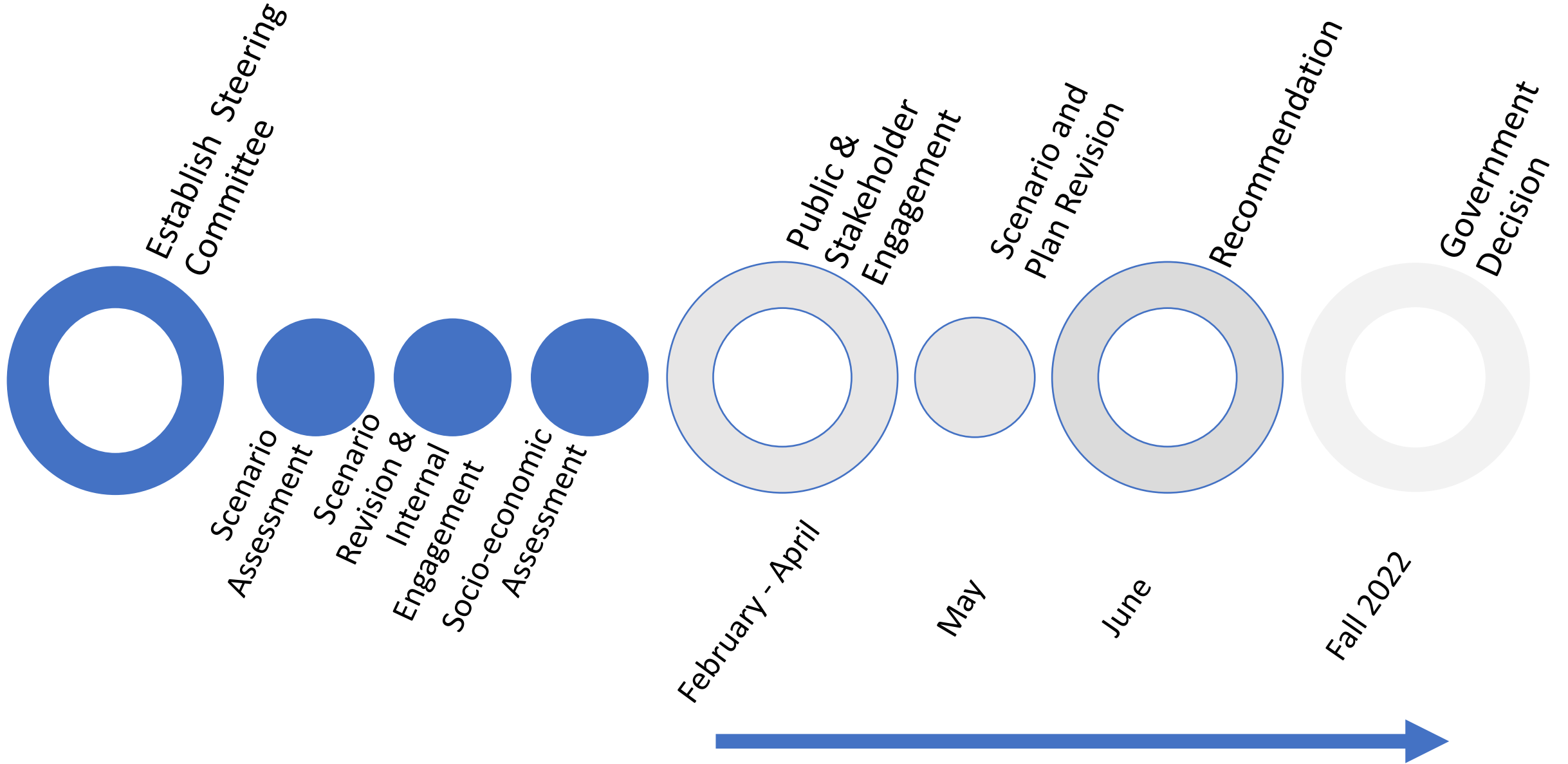
Habitat Support Tools:

- Habitat restoration
- Habitat Management – mitigate impacts of industrial development

Population Support Tools:

- Maternity Penning
- Enclosures (excluding predators)
- Supplemental Feeding
- Predator management

Next Steps



Ongoing Engagement

- Regional engagement with other interested First Nations and affected stakeholders includes:
 - Regional engagement tables (Northern Rockies Stakeholders, Northeast Roundtable)
 - Indigenous & non-Indigenous community engagement sessions
 - Engagement “Drop-In” at Fort Nelson District Office (after public release of draft plan)
- Broader public engagement is planned to start in March and will consist of:
 - Online posting period
 - Online feedback form & written submissions
 - Additional engagement sessions through regional forums
- Results from engagement will inform revisions to BCPRP management, recommendation development, and subsequent decision for plan approval
- “What We Heard” report will be released with follow-up sessions at regional engagement tables



Q & A