

Spruce Beetle and Forest Health in the Peace



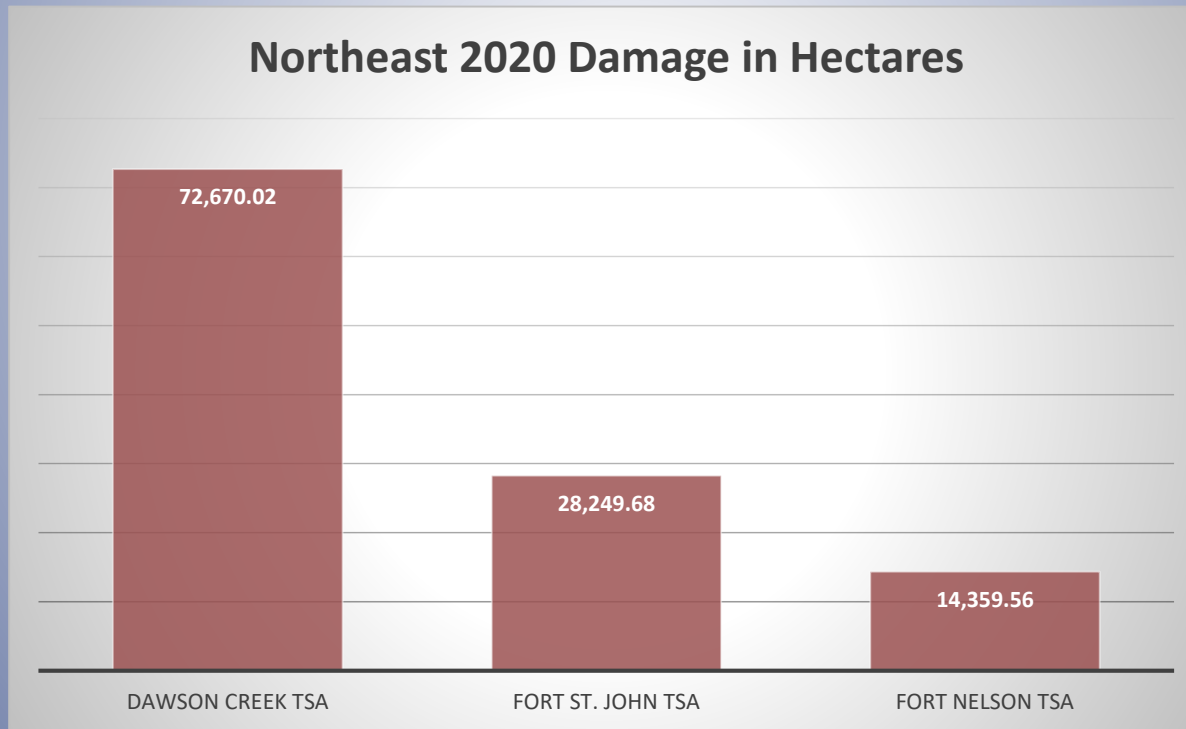
Anne Marie Fonda, RFT
Stewardship Specialist
Peace Natural Resource District

Spruce Beetle and Forest Health Update

- District Forest Health surveys
- Beetle flight monitoring
- Northeast Spruce Beetle Working Group
- NE Forest Health Pests and Pathogens



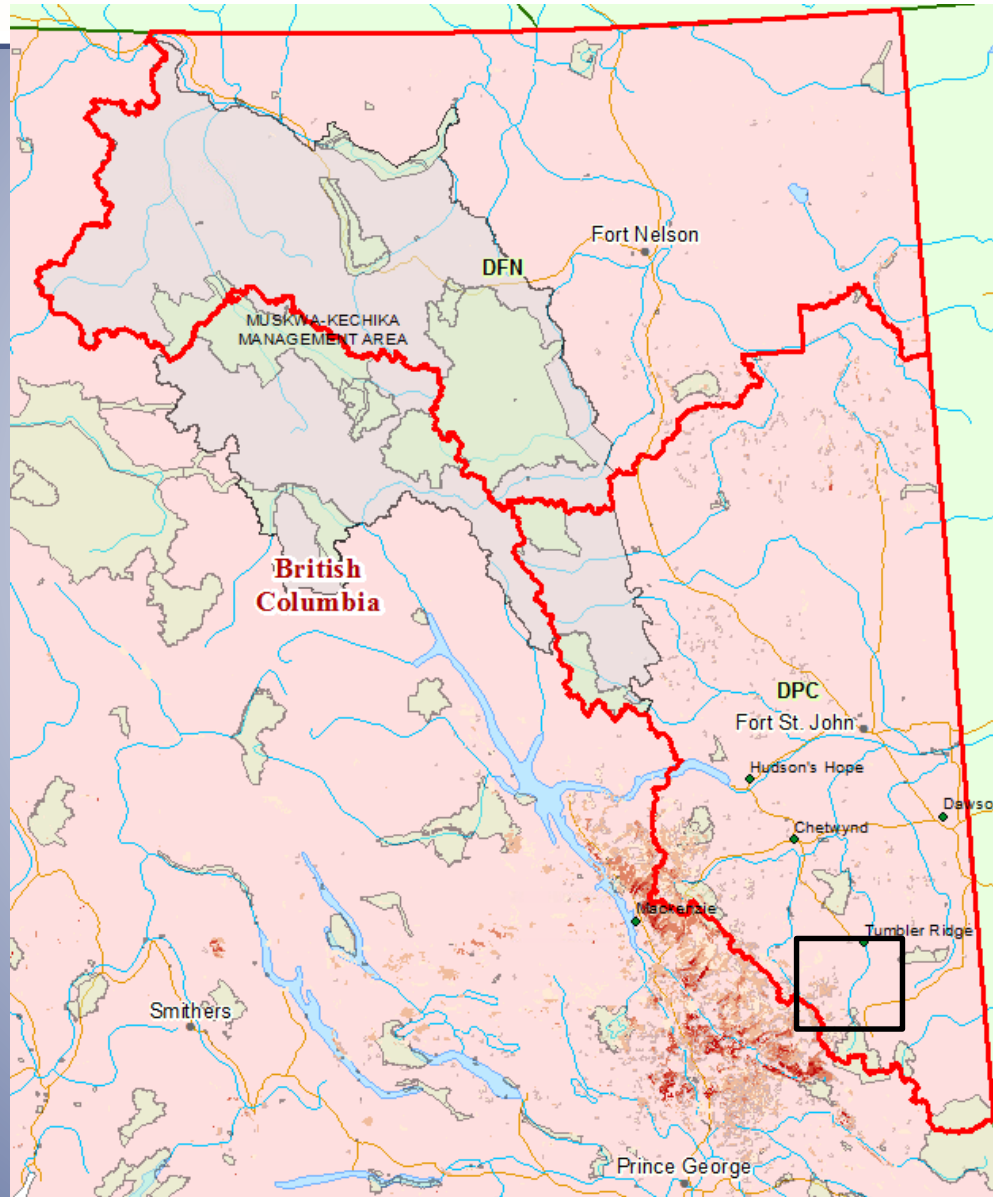
AOS Detection Data

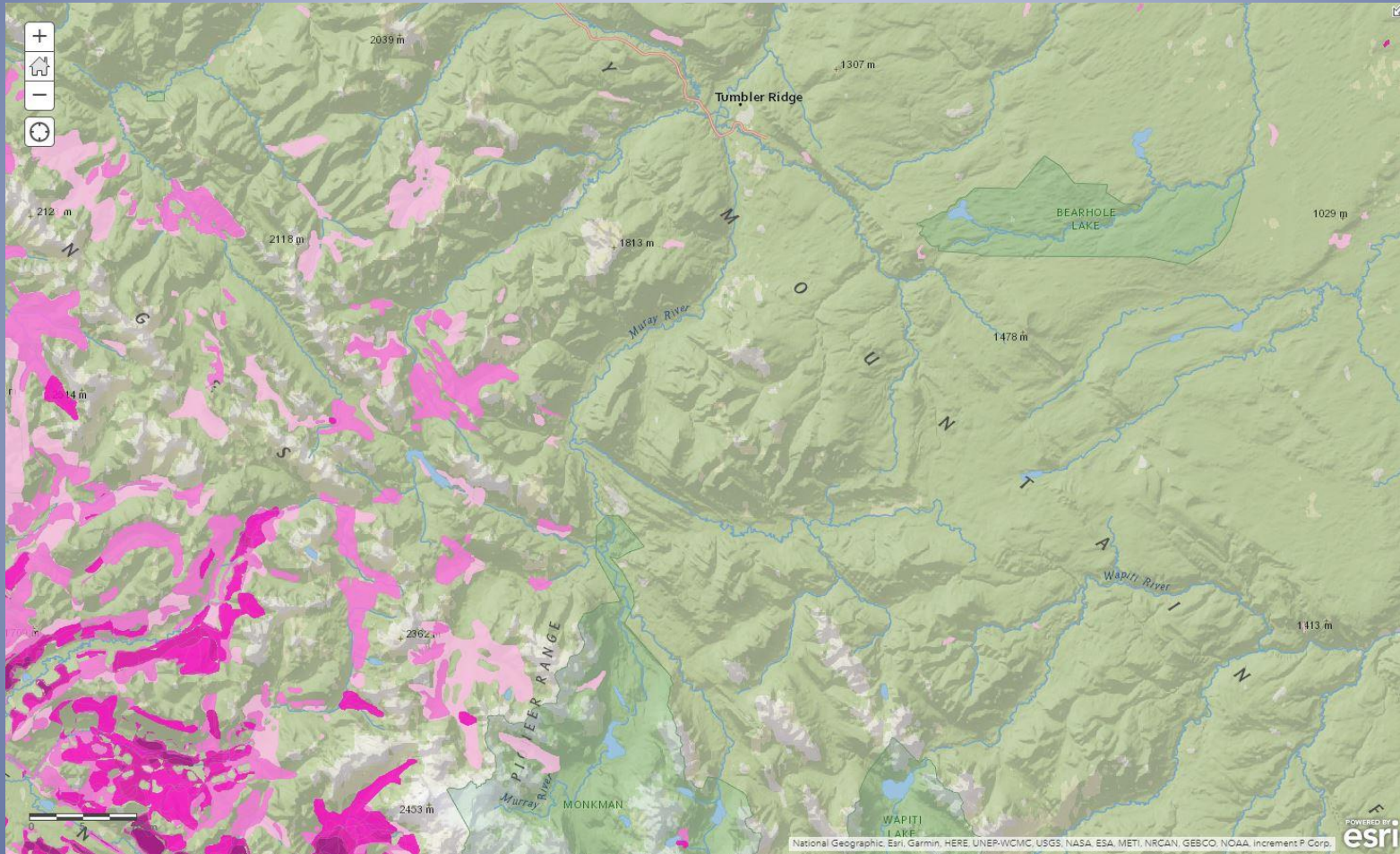


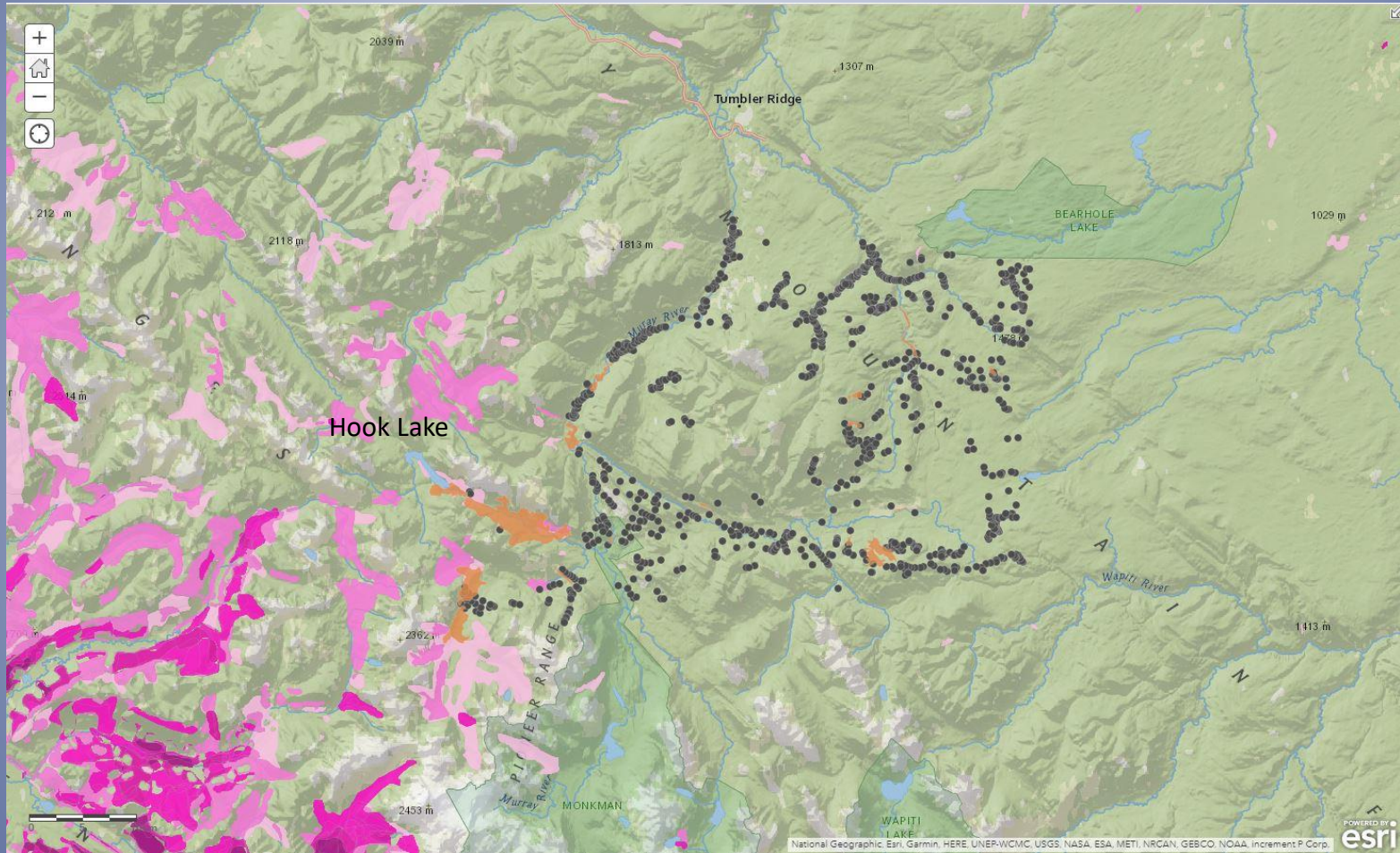
Helicopter GPS Surveys



Murray River Valley 2020







2020 Aerial Detection - Drones



Credit and thanks to Wade Chmelyk, Operations Technician
BCTS Peace-Liard

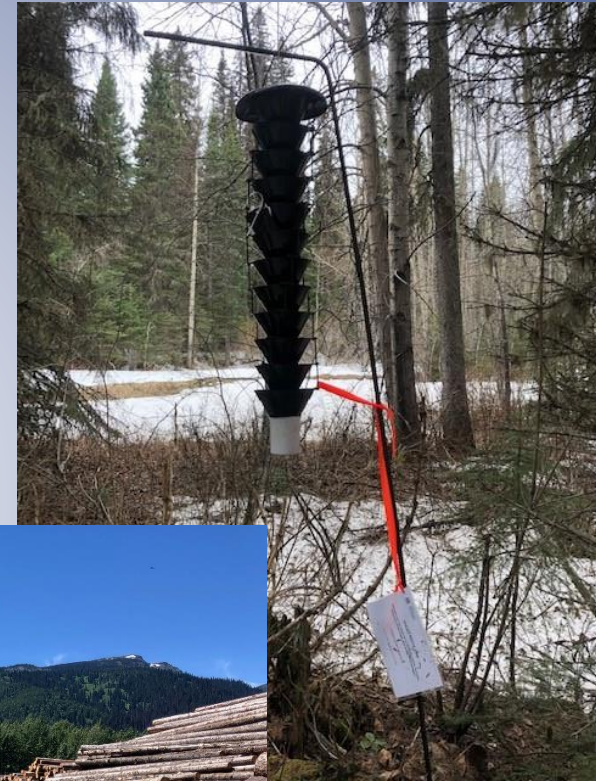
Ground Surveys

- % of attack over past 3 years
- Year of next beetle flight
- Stand structure and understory regeneration
- Management options –Trap Trees



Beetle Flight Monitoring

- Lindgren funnel traps with lures
- 2020 flight mid-May through August



NE Spruce Beetle Working Group

Collaborative Approach

- First Nations/Forest Licensees/BCTS and FLNRORD
- Facilitated by FLNRORD
- Share information
- Discuss operational issues



Upper Burnt River 2020

NE Forest Pests and Pathogens

- Mountain Pine Beetle
- Western balsam bark beetle
- Eastern Spruce Budworm
- Aspen leaf miner
- Bruce spanworm
- Large Aspen tortrix
- Aspen decline



NE Forest Pests and Pathogens

- Health of young stands
- Foliar pathogens
- Pine Stem Rust
- Root Disease
- Report a forest health concern!

