

Regional Strategic Environmental Assessment



Justice Burke Ruling (Yahey)

[1783]

- ***The Province has been unable to show that it is effectively considering or addressing cumulative effects in its decision-making...***
- ***It is concerning that the Province has continued to proceed with authorizing resource use and extraction in the northeast of BC in the absence of these important tools.***

Includes having to say “No” when thresholds of CE exceeded



RSEA is an initiative through the Environmental Stewardship Initiative

- Collaborative partnership between the Province, First Nations and industry Initiated in 2015
- Currently composed of 30 First Nations across 4 project areas:
 - North Coast Ecosystem Restoration Project and North Coast Cumulative Effects Assessment Project
 - Skeena Sustainability Assessment Forum
 - Omineca Cumulative Effects Assessment Project and
 - Regional Strategic Environmental Assessment (NE)





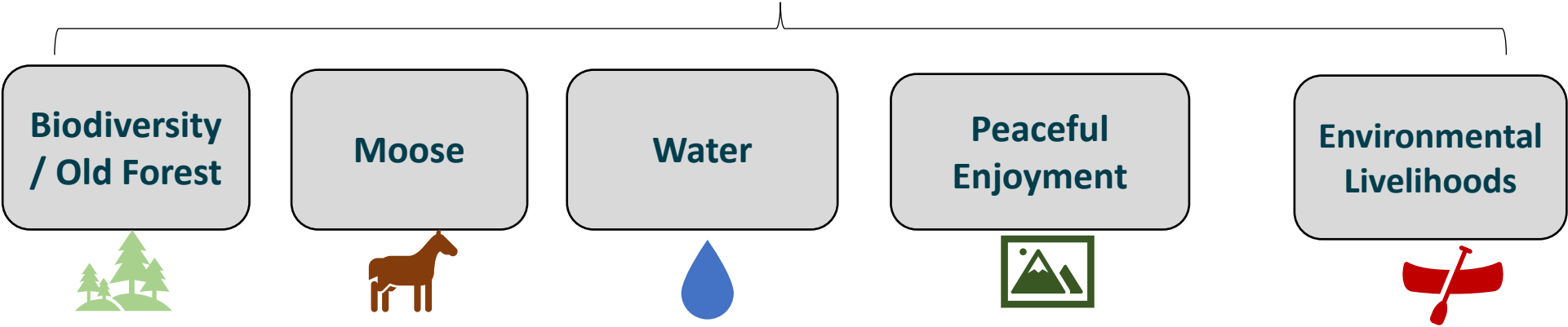
RSEA

Province of British Columbia
Seven Treaty 8 First Nations
Observers (Industry)

Participating First Nations:

- West Moberly First Nations
- Saulteau First Nations
- Halfway River First Nation
- Doig River First Nation
- Prophet River First Nation
- McLeod Lake Indian Band
- Blueberry River First Nations

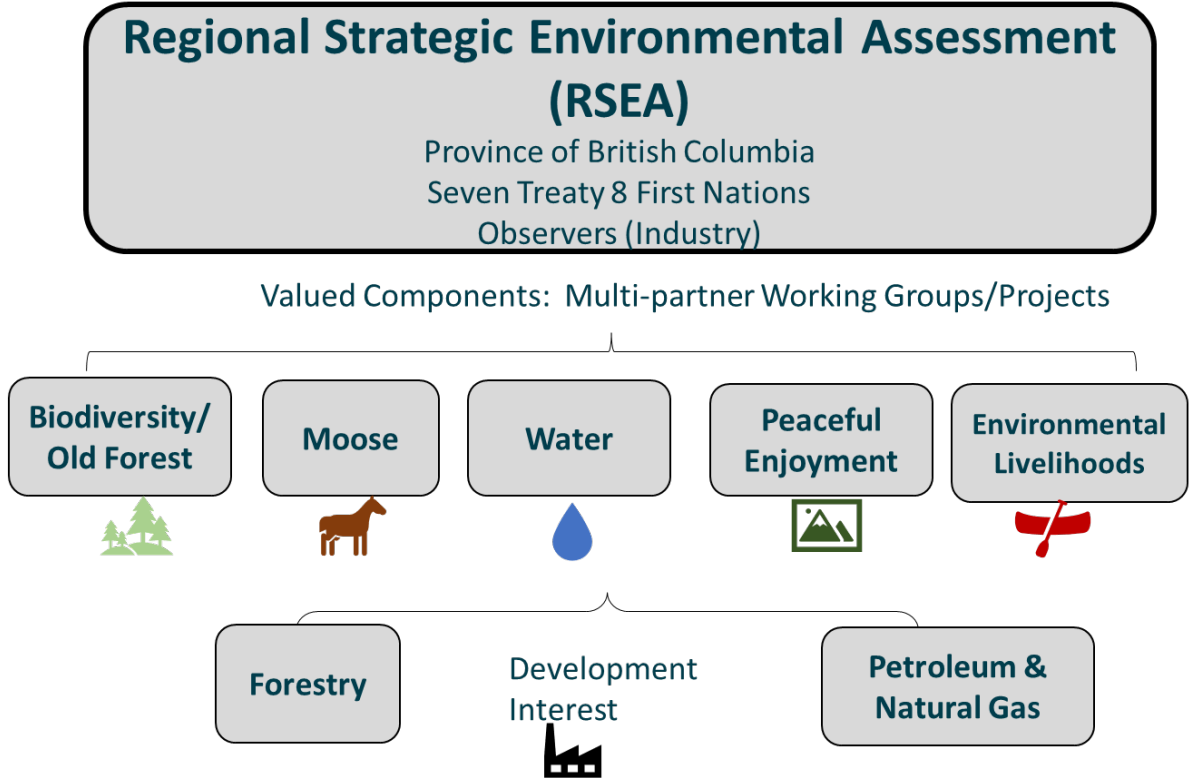
Valued Components: Multi-partner Working Groups/Projects



Current Condition Reports were completed for each of the 5 values as well as a Recommendation Report

What CE information do we have for the NE?

Northeast CE assessment

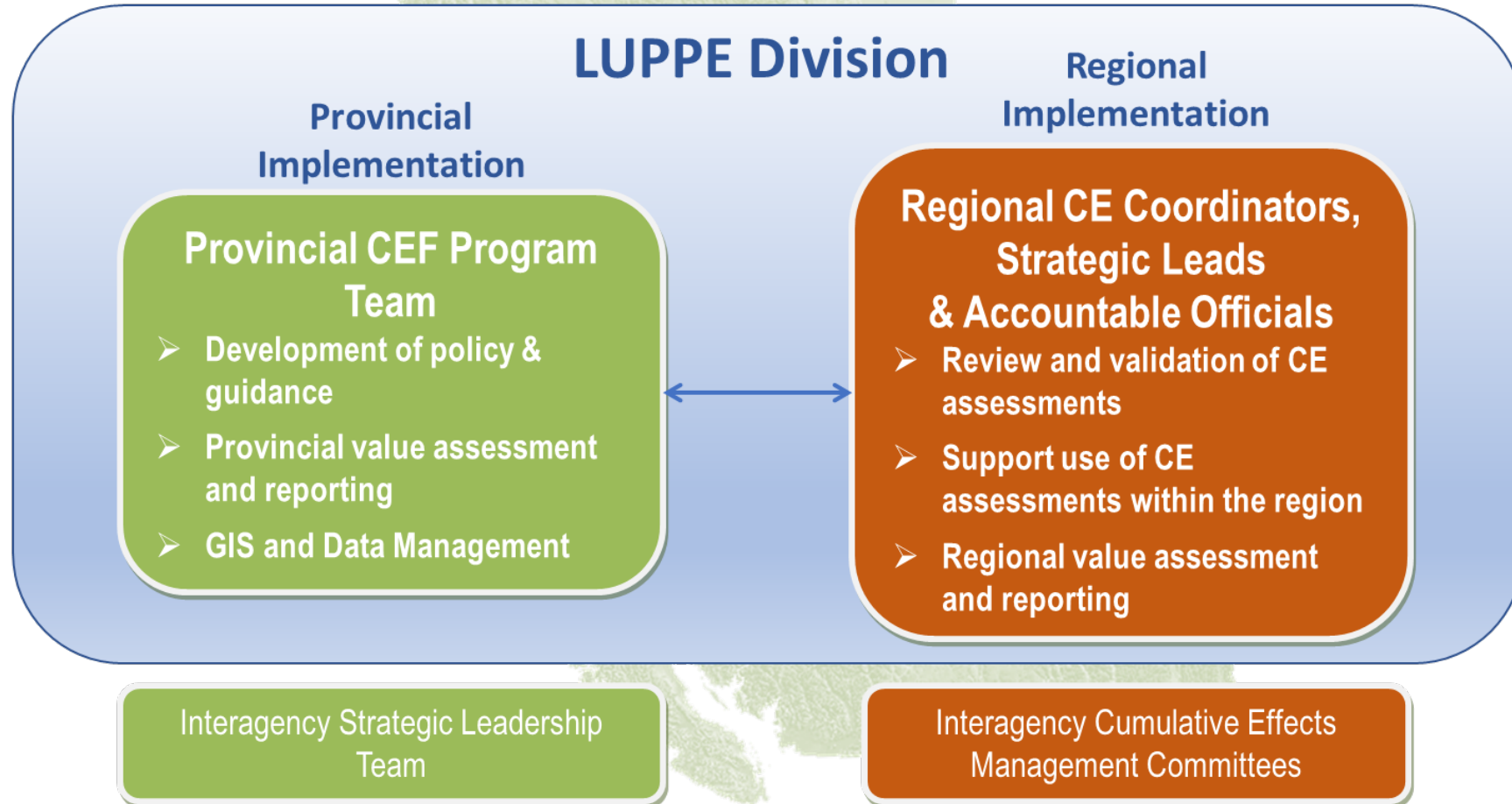


Provincial CE Framework

- Provincial values
- Grizzly Bear
 - Aquatic Ecosystems
 - Old Growth
 - Moose
 - Forest Biodiversity



CEF Implementation



- Negotiations are on-going
- Current condition reports not yet public
- CE/RSEA information is being used internally to support application decision support.

