

# Land Use Planning Update

NE Roundtable Update  
June 14, 2023



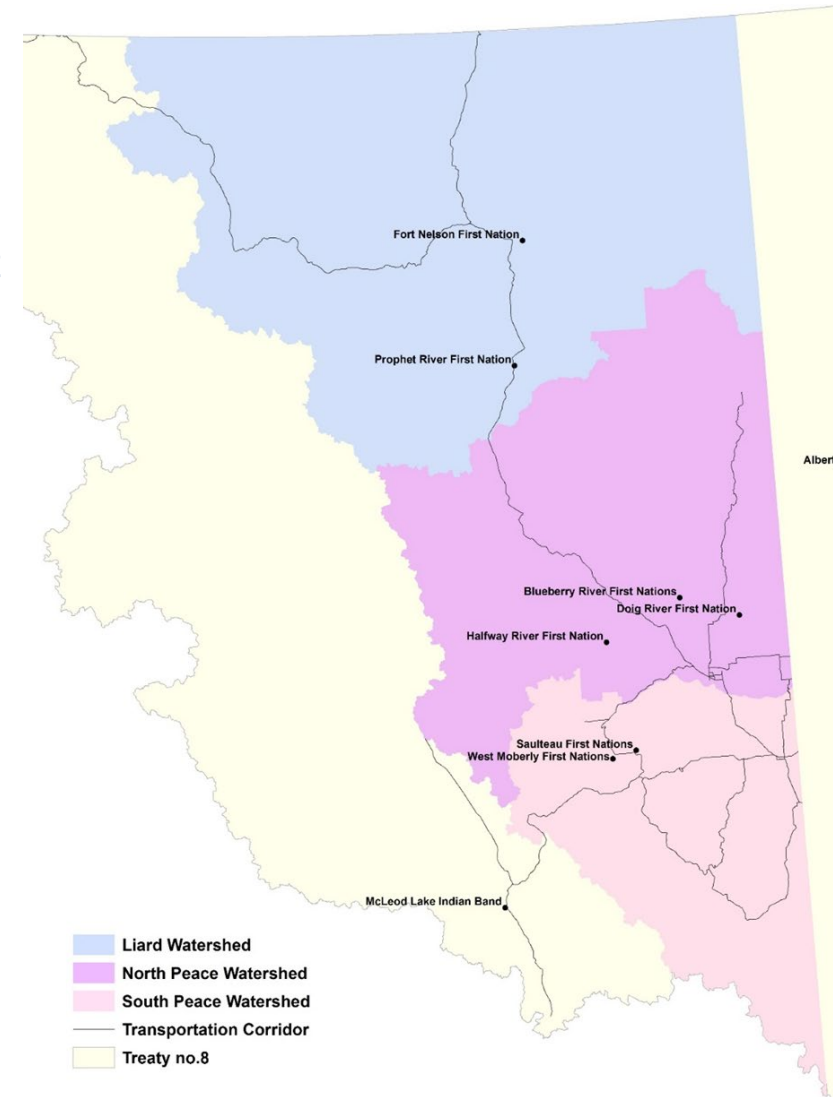
BRITISH  
COLUMBIA

# Land use planning

Land use plans from 1990s didn't adequately recognize or protect Treaty 8 rights. Treaty 8 First Nations treated as a stakeholder at the table, not independent governments with constitutionally protected rights.

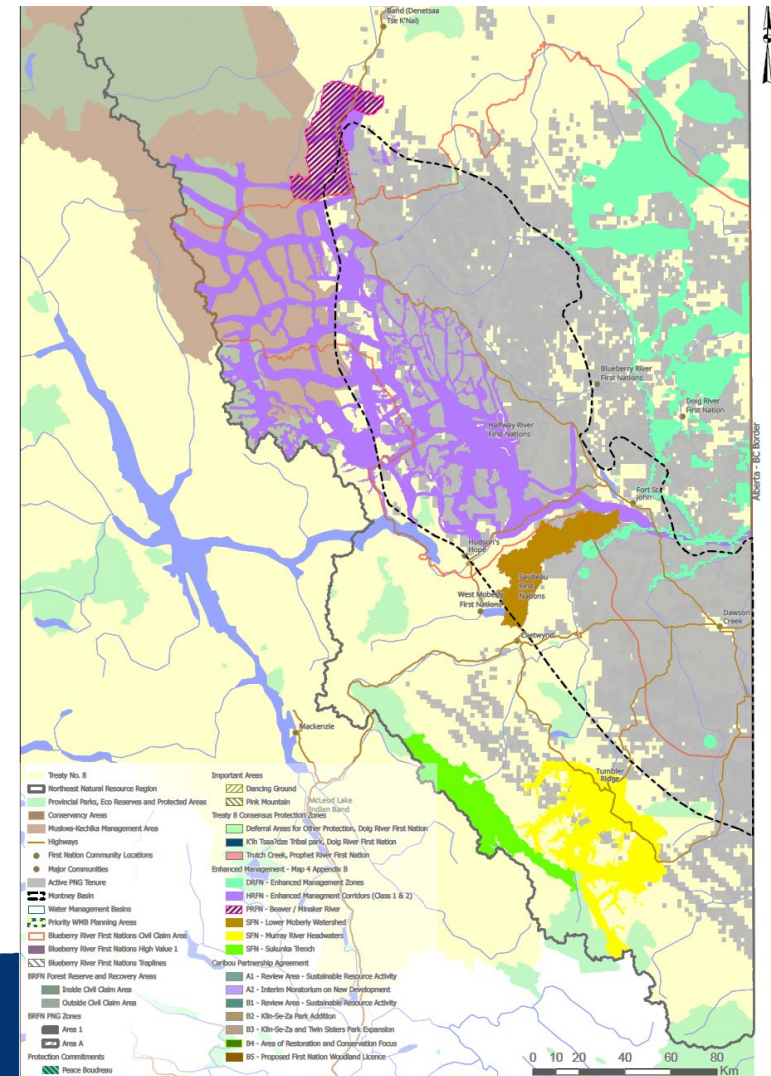
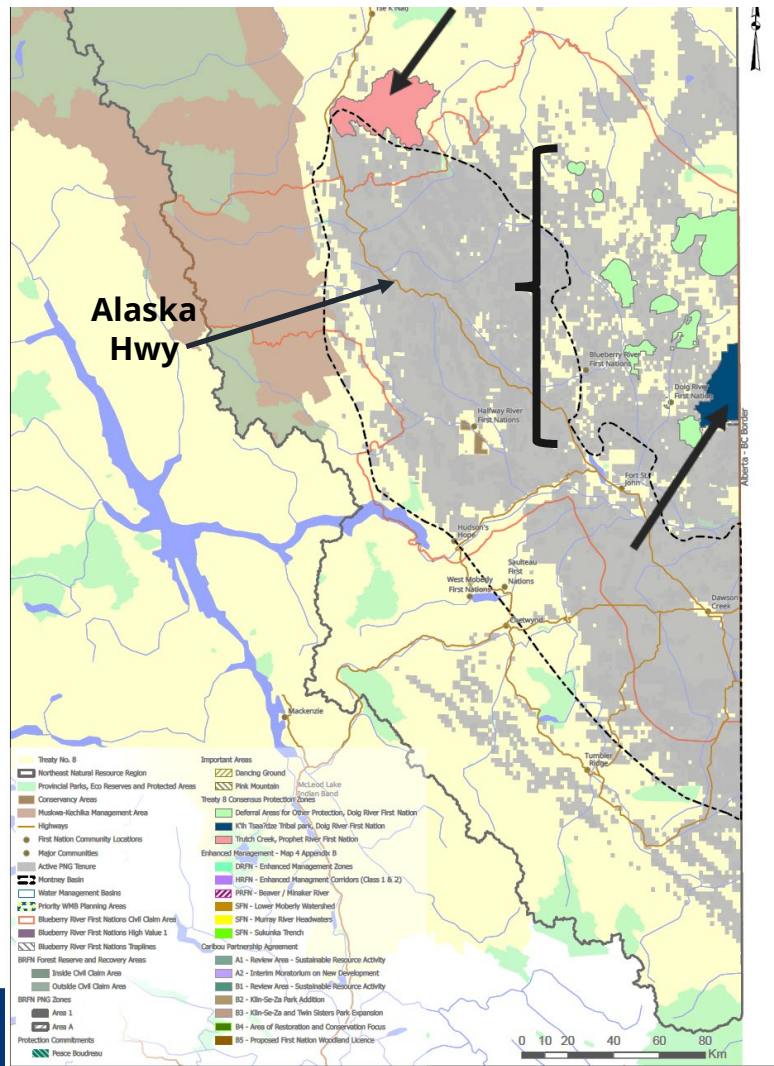
## PATH FORWARD:

- Develop new land use plans in the **Liard, North Peace and South Peace** areas.
- Work with BRFN in watersheds of greatest interest = Watershed Management Basin plans or "WMB plans."
- WMB plans are intended to implement **four agreed principles of ecosystem-based management** applicable for all natural resource sector activities:
  - Ensure old growth forest levels reflect what would be a natural condition for the ecosystems,
  - Establish reserved areas that protect, connect and recover important values,
  - Effectively protect and recover water, riparian and wildlife features, and
  - Promote sustainable economies and resilient communities.
- Four WMB plans from BRFN IA projected for completion within three years.



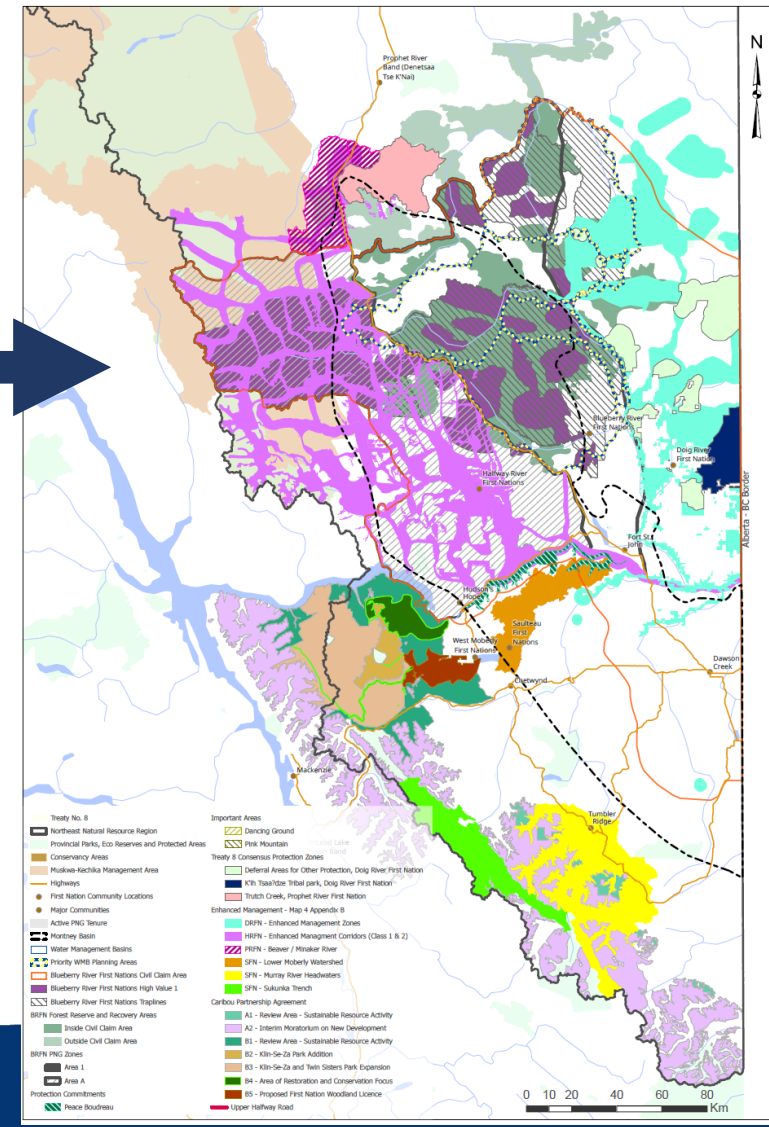
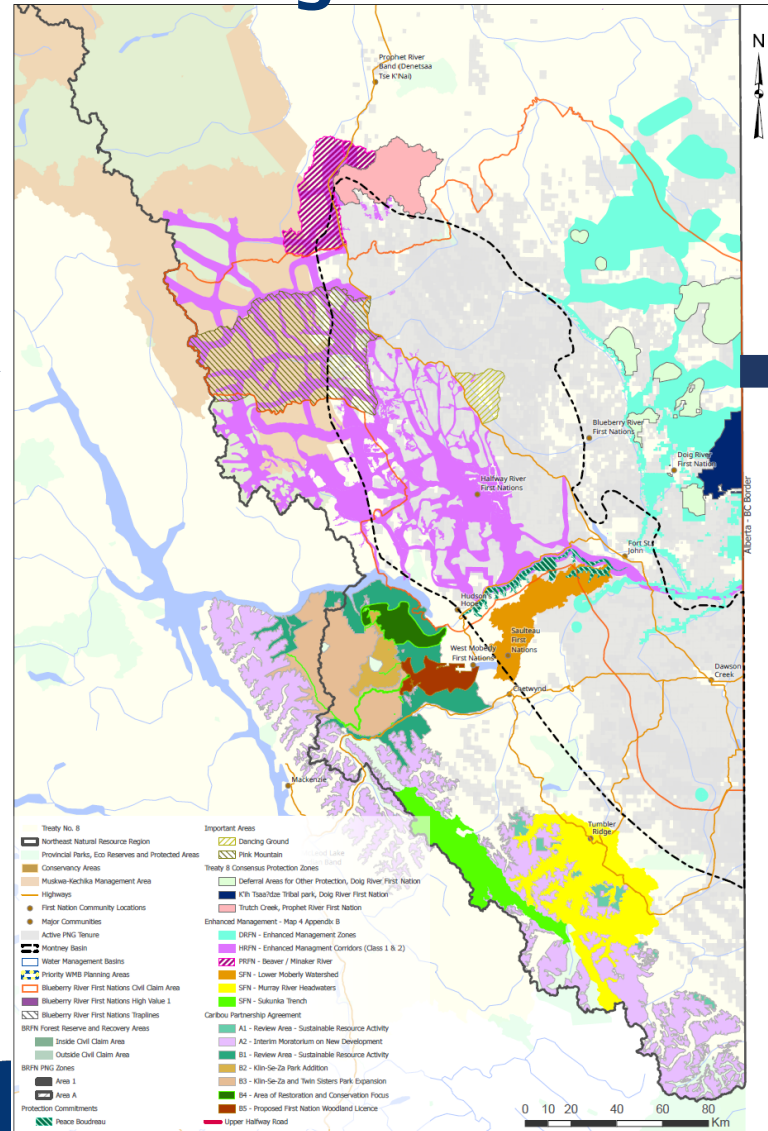
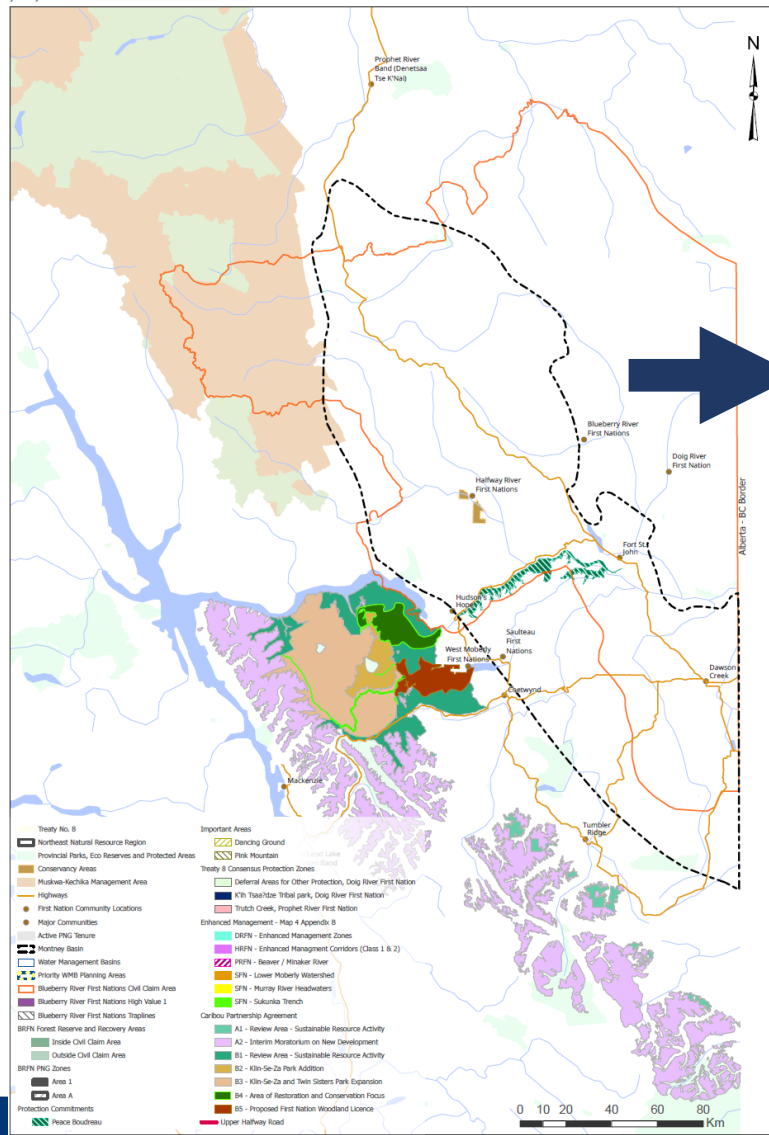
# Land use measures: Consensus Document

New protection proposals + Enhanced management areas



# Today

# Future State – better rights protection via management measures & conservation



# Early land use planning & operations

Land use plans and “WMB plans” are complex and will take years bringing multiple sectors, Nations and the public together, covering larger areas. To provide greater continuity for activities now, and a practical approach to shared decision making, a different approach is being advanced.

## PATH FORWARD:

- ‘Restoration and development plans’ with Nations and industry:
  - Planning pilots with one or more sectors, with Halfway River and Sauletau First Nations (to start).
  - HV1 Plans with BRFN, focused on PNG activities (new intensive, up front planning approach).
- With BRFN, short term timber harvesting and oil and gas activities confirmed, to support economic activities while planning & restoration actions progress.

