

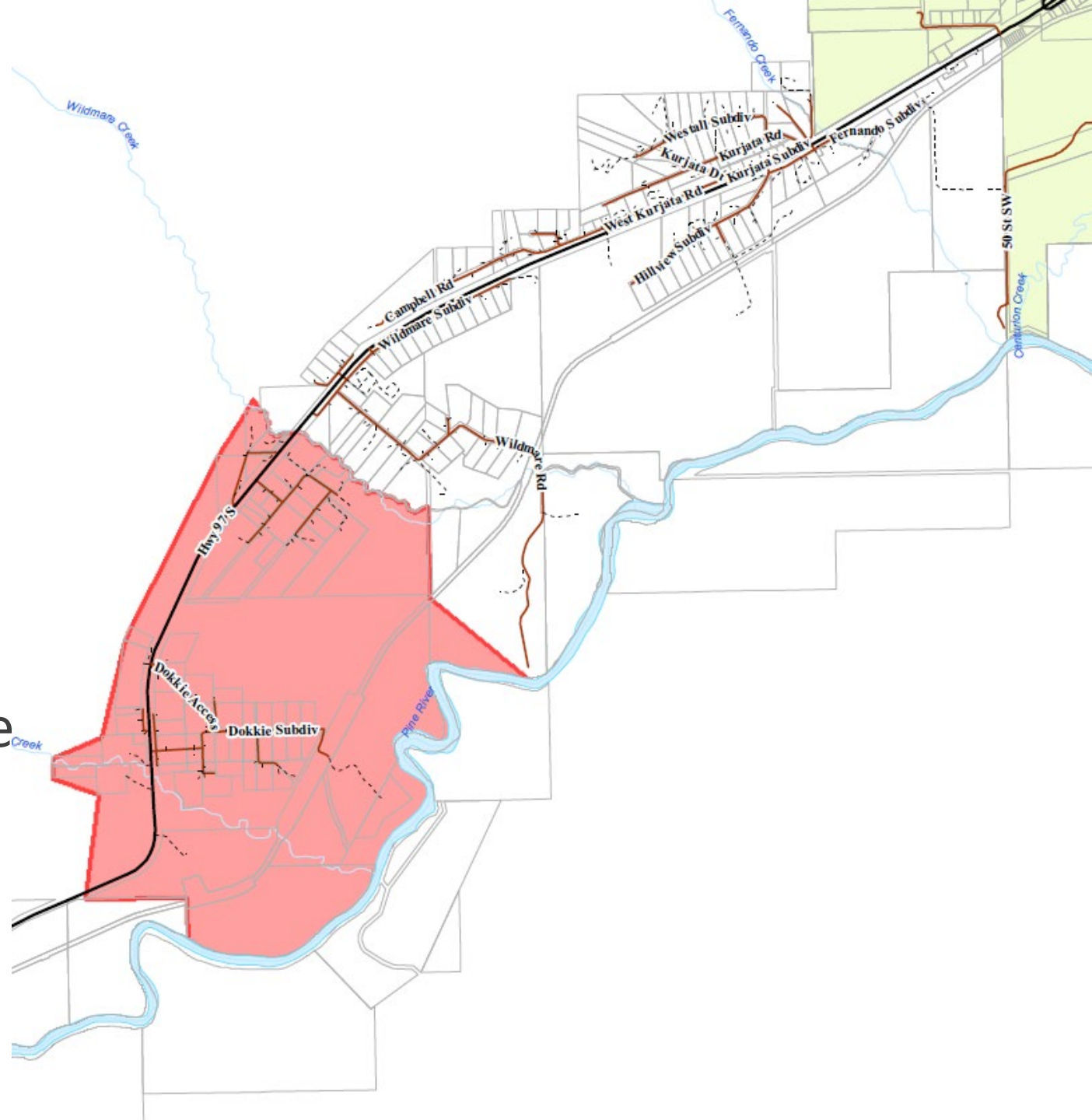
2024 EMCR Northeast – Peace Region Community-based Impact Summary



Ministry of
Emergency Management
and Climate Readiness

PRRD - Wildmare Creek

- 35 evacuees to Chetwynd
- Alert / Order April 24th 20:00
- Removal Time April 25th 11:00
- Shortest evacuation of the year due to aggressive wildfire response



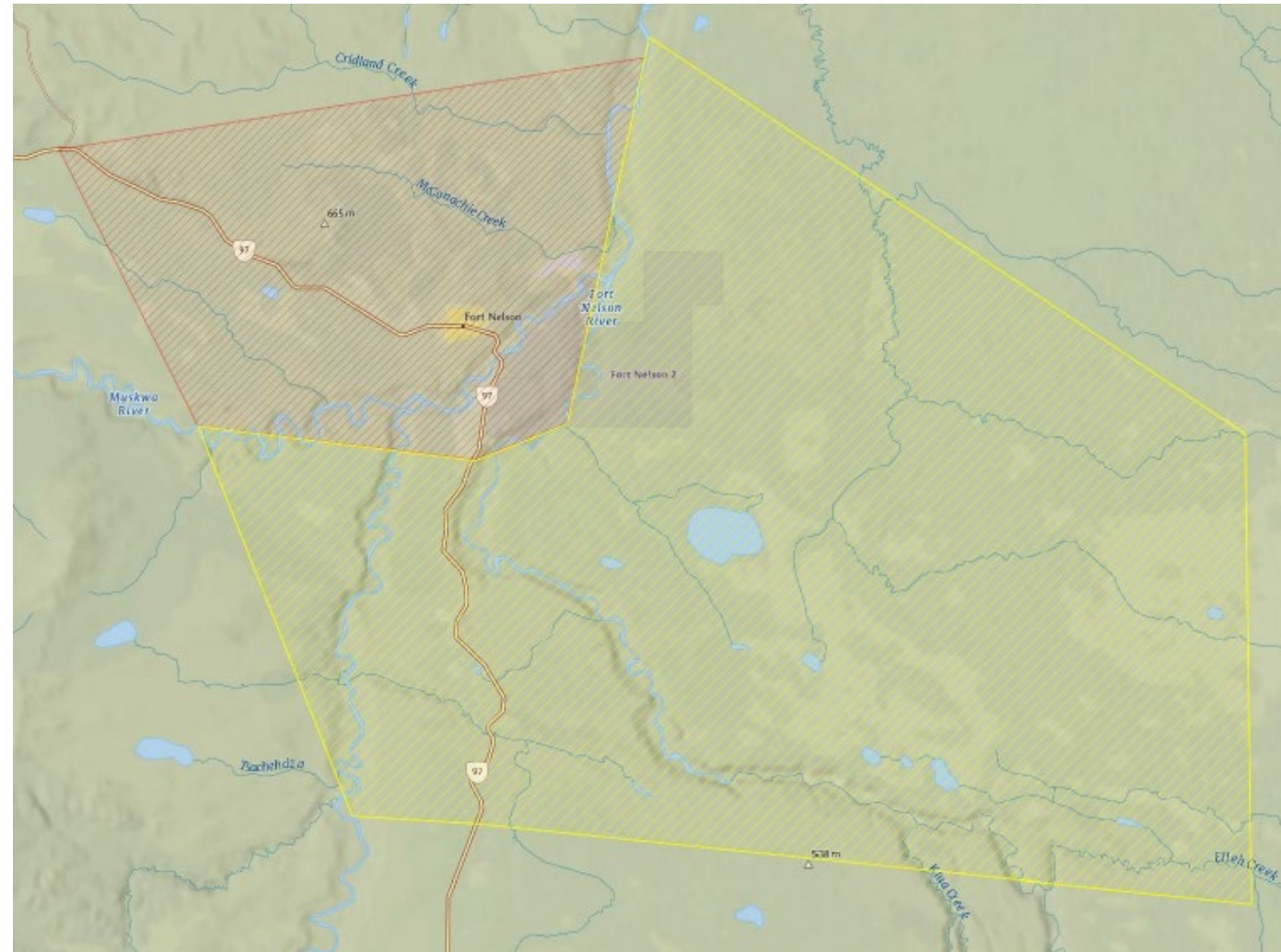
Ministry of
Emergency Management
and Climate Readiness

Fort Nelson – Parker Lake

- Tactical evacuation of 4000+ Citizens recommended at 18:00 May 10
- Order Time May 10 – 22:30
- Removal Time May 27 – 08:30
- First tactical evacuation of a Northern Health hospital / emergency room
- Several ESS Challenges – Next slide
- Livestock – 5000 cattle during Calving Season
- Shelter in place of most large-scale producers
- Locals given access permits to drive cattle pasture to pasture to keep calves safe from smoke inhalation



Ministry of
Emergency Management
and Climate Readiness



Parker Lake ESS Response

Fort St John

- 4 hrs travel
- 2991 Evacuees
- 60+ ESS volunteers
- Rec. Centre Lineups – 12+ hours

Dawson Creek

- 4.75 hrs travel
- 804 evacuees
- 20 + ESS volunteers
- Sunset Prairie Lodge activated

Chetwynd

- 5.5 hrs travel
- 67 evacuees
- Remote ESS support from Burns Lake

Prince George

- 8 hrs travel
- 4 evacuees
- Group Lodging CNC on Standby

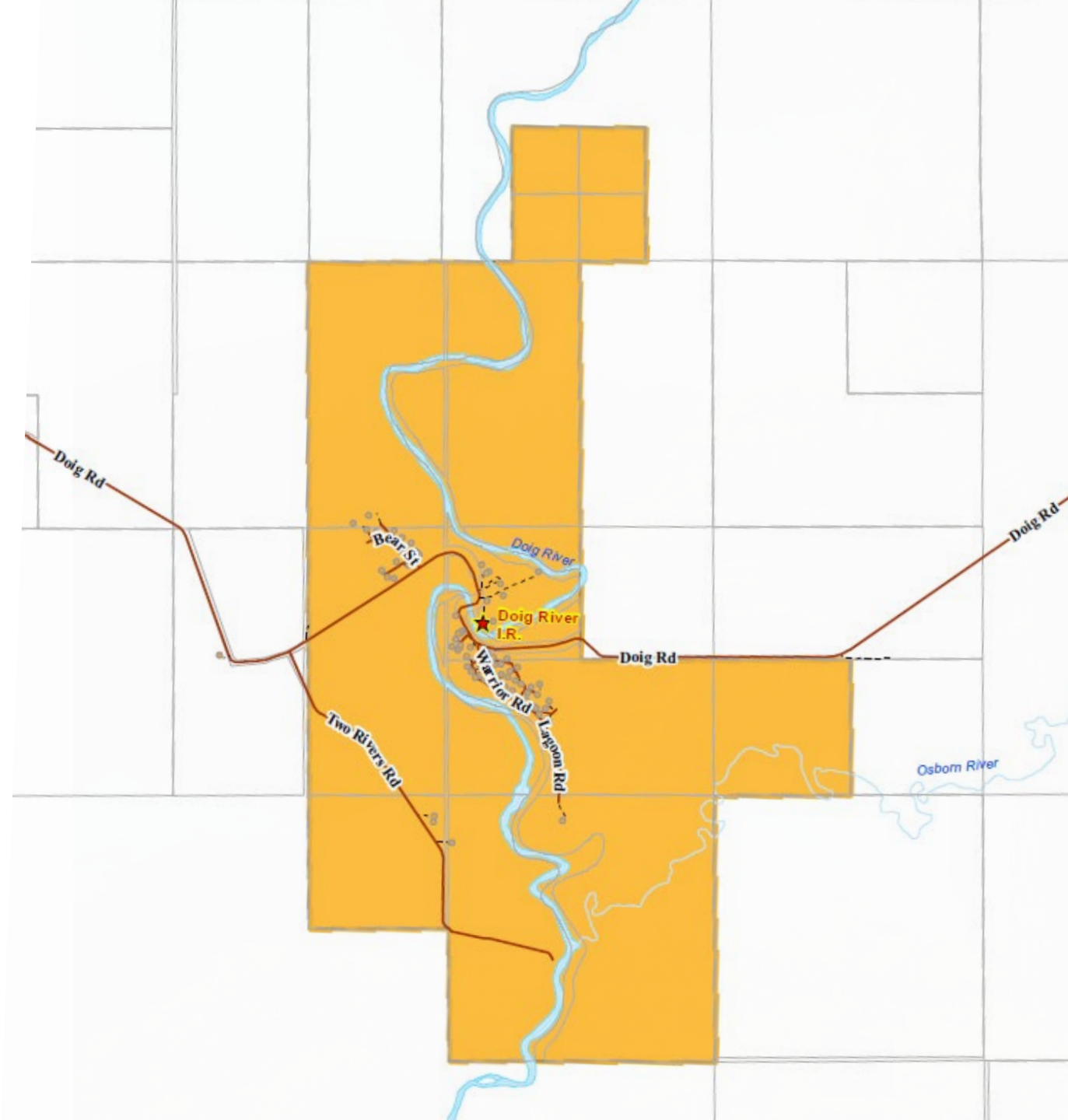


Doig River First Nation

- Approximately 150 Evacuees
- Order Time – May 13 14:30
- Removal Time – May 20 11:00
- ESS Challenges due to Parker Lake – Sunset Prairie and Billeting primarily utilized for accommodations



Ministry of
Emergency Management
and Climate Readiness



Blueberry River First Nations

- 6 residents evacuated while under evacuation alert due to health concerns and heavy smoke drift from Fort Nelson / Donnie Creek
- Evacuation May 10th., Return home May 14th after clean air facilities were activated in community.



Ministry of
Emergency Management
and Climate Readiness



Sunset Prairie Lodge

- Black Diamond Facility – 30 minutes from Dawson Creek along the Brayden Rd.
- 64 evacuees registered from multiple communities
- Private rooms and showers, 3 meals per day
- Pets – CDART / SPCA / Community Donations allowed for the support of domestic pets housing outside the facility



Ministry of
Emergency Management
and Climate Readiness



2024 Peace Region Summary

- 4 Evacuation events occurred from April 24th to May 27th, ranging from 24 hours to 17 days
- Over 4200 people displaced, with some people forced to travel over 800 km for accommodation supports
- ESS was a region-wide effort with volunteer supports coming from as far as Burns Lake
- These events highlight the ingenuity and resilience that Northern communities possess when responding to the challenges of our wide-spread geography and resource constraints

