

Park Management Planning - Northeast

1. Backcountry Protected Areas – Muskwa Kechika
2. Frontcountry Protected Areas – Muskwa Kechika
3. Klinse-za/Twin Sisters Park and Protected Area
4. Tsaa Nuna Conservancy



BC Parks

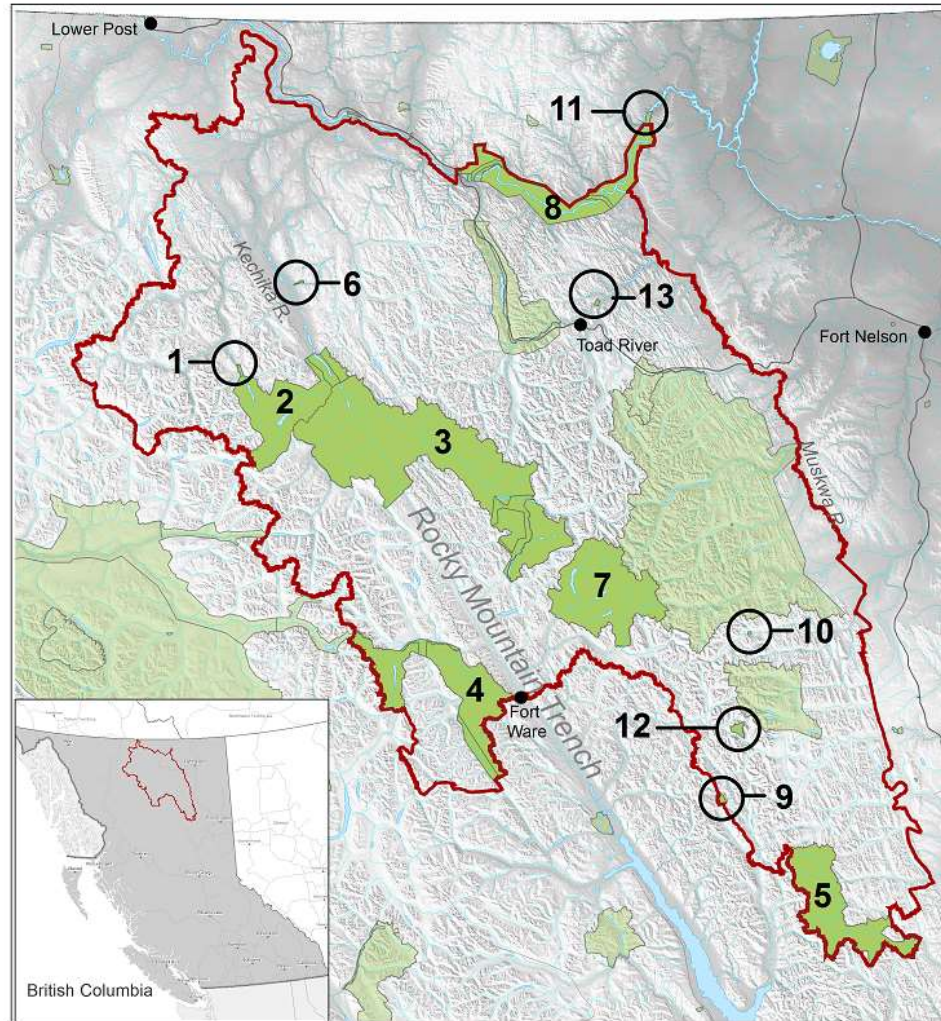


Phases of the planning process



1. Backcountry Protected Areas – Muskwa Kechika

- Summer 2024 – public engagement on draft plan
- Winter 2024 – develop final plan based on feedback
- Spring 2025 – final reviews
- Summer 2025 – management plan implementation



Overview Map Backcountry Protected Areas of the Muskwa-Kechika

Legend

- Muskwa-Kechika Management Area (MKMA)
- Provincial Parks & Protected Areas - All
- Protected areas included in management plan

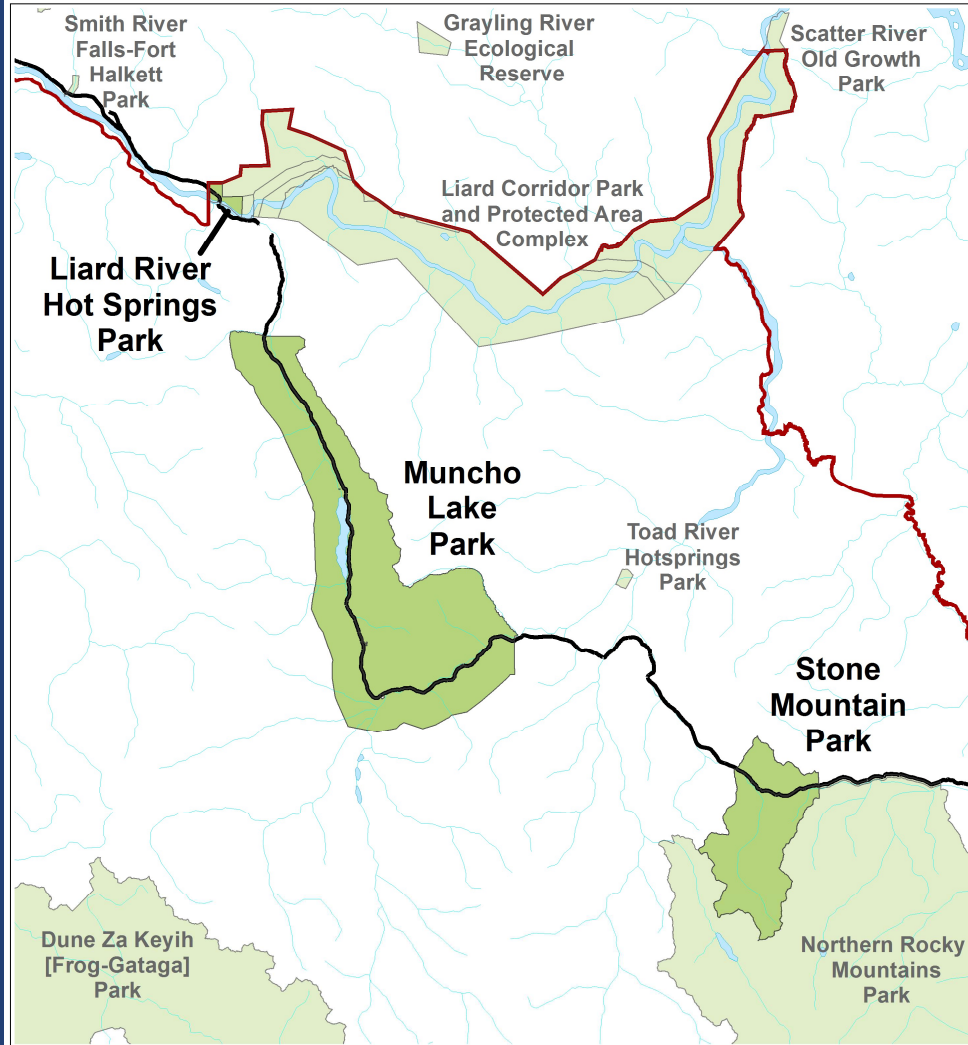
- Dall River Old Growth Park
- Denetiah Park & Denetiah Corridor Protected Area
- Dune Za Keyih/Frog Gage Park & Protected Area
- Finlay-Russel Park & Protected Area
- Graham-Laurier Park
- Hornline Creek Park
- Kwadacha Wilderness Park
- Liard River Corridor Park & Protected Area Complex
- Ospika Cones Ecological Reserve
- Prophet River Hotspings Park
- Scatter River Old Growth Park
- Sikanni Chief River Ecological Reserve
- Toad River Hotspings Park

0 12.5 25 50 75 100
Kilometers
BC Albers Projection/NAD 83

BRITISH COLUMBIA BC Parks
Date Created: October 9, 2023

2. Frontcountry Protected Areas – Muskwa Kechika

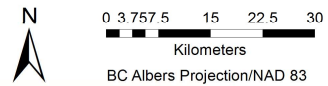
- Initial public consultation complete
- Fall 2025
- Additional meetings with stakeholder groups and First Nations to develop plan



Overview Map Frontcountry Parks of the Muskwa-Kechika

Legend

- Muskwa-Kechika Management Area (MKMA)
- Alaska Highway
- Provincial Parks & Protected Areas - ALL
- Protected areas included in management plan



3. Klinse-za/Twin Sisters Park and Protected Area

- Park expanded to ~200,000 ha in June 2024
- Caribou Partnership Agreement
- Develop management direction in partnership with Saulteau and West Moberly First Nations
- Initiate project 2025



4. Tsaa Nuna Conservancy

- Conservancy established 2020
- Develop management direction in partnership with Halfway River First Nation
- Initiate project 2025





Questions?



BC Parks