

Drought Management

NE Round Table

June 3, 2025



Marianne Johnson
Director, Authorizations
WLRS - Permitting Transformation Division- Northeast,

Suzan Lapp
Section Head

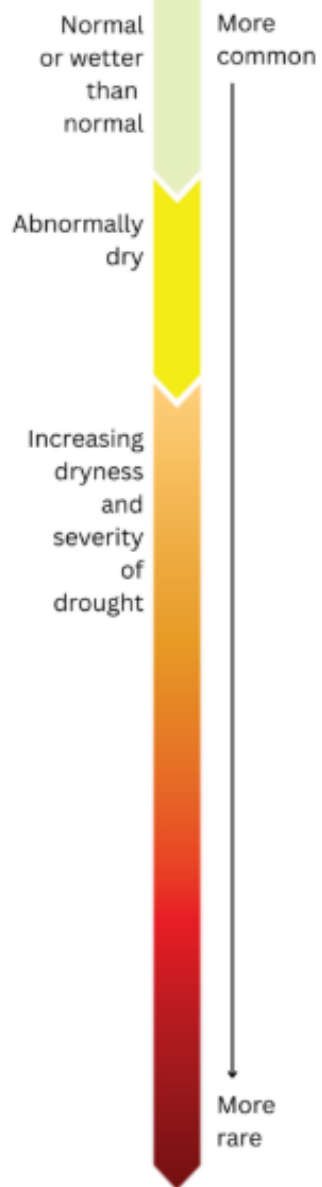
2024 Drought Levels

Drought Levels:	0	1	2	3	4	5	*	Not updated outside of core drought season																
BASINS	02-May	09-May	16-May	23-May	30-May	06-Jun	13-Jun	20-Jun	27-Jun	04-Jul	11-Jul	18-Jul	25-Jul	01-Aug	08-Aug	15-Aug	22-Aug	29-Aug	05-Sep	12-Sep	19-Sep	26-Sep	03-Oct	10-Oct
Fort Nelson	3	3	4	4	4	4	4	4	3	3	3	4	4	4	4	4	4	5	5	5	5	5	5	4
East Peace	5	5	5	5	5	5	5	5	4	4	4	4	4	4	4	4	4	4	5	5	5	5	4	4
North Peace	4	4	4	4	4	4	4	4	3	3	3	3	3	2	2	3	3	3	4	4	4	4	4	3
South Peace	4	4	4	4	4	4	4	4	4	4	4	4	4	4	3	4	4	4	4	4	5	5	4	3
Northwest	0	0	0	0	0	0	0	0	0	0	0	0	0	0	0	0	0	0	0	0	0	0	0	0
Stikine	0	0	0	0	0	0	0	0	0	0	0	0	0	0	0	1	2	2	1	1	1	0	0	0
Skeena-Nass	1	1	2	2	2	2	2	2	2	2	2	2	2	3	3	4	4	4	4	4	4	1	0	0
Bulkley-Lakes	3	3	3	3	3	3	3	3	3	3	3	3	3	4	4	5	5	5	5	5	5	3	3	3
Finlay	2	2	2	2	1	1	1	1	1	1	1	1	1	0	1	1	2	2	2	2	2	1	0	0
Parsnip	2	2	2	2	2	2	2	2	2	2	2	2	2	2	2	2	3	3	4	4	4	2	1	1
Upper Fraser West	3	3	3	3	3	3	3	3	3	3	3	4	4	4	4	5	5	5	5	5	5	5	5	5
Upper Fraser East	3	3	3	3	2	2	2	2	2	2	1	2	2	2	2	3	3	3	2	3	4	1	0	0
Upper Columbia	1	1	1	1	1	1	1	1	1	1	1	1	1	1	1	2	1	0	0	0	0	0	0	0
Lower Columbia	1	1	1	1	1	1	1	1	1	1	1	2	2	3	3	4	3	3	3	3	3	3	3	3
West Kootenay	1	1	1	1	1	1	1	1	1	1	1	1	1	2	2	3	3	3	2	3	3	4	5	5
East Kootenay	1	1	1	1	1	1	1	1	1	1	1	1	1	1	1	1	1	1	0	1	1	1	1	1
Kettle	1	1	1	1	1	1	1	1	1	1	1	2	2	3	3	3	3	3	3	3	3	3	3	3
Middle Fraser	3	3	3	3	3	3	2	2	2	2	1	1	1	2	2	2	2	2	2	2	2	1	0	0
Lower Thompson	2	2	3	3	2	2	2	2	1	1	1	2	2	2	3	3	3	3	2	2	2	1	0	0
North Thompson	2	2	2	2	1	1	1	1	1	1	1	1	2	3	3	3	3	3	2	2	2	1	0	0
South Thompson	2	2	2	2	2	2	2	2	1	1	1	2	2	2	2	3	3	3	2	2	1	1	1	1
Nicola	2	2	2	2	2	2	2	2	2	2	2	2	3	3	3	4	4	4	4	4	4	4	3	3
Okanagan	2	2	2	2	1	1	1	1	1	1	1	2	3	3	3	3	3	3	2	2	2	2	2	2
Similkameen	2	2	2	2	2	2	2	2	2	2	2	3	3	3	4	4	3	2	2	2	1	2	2	2
Central Pacific Range	1	1	1	1	1	1	1	1	1	1	1	1	1	2	2	2	2	2	2	2	2	1	0	0
Eastern Pacific Range	2	2	2	2	2	2	1	1	1	1	1	1	1	2	2	2	3	3	2	2	2	2	1	1
Sunshine Coast	1	1	1	1	1	1	1	1	1	1	2	3	3	3	3	3	3	3	3	2	2	1	0	0
Lower Mainland	2	2	2	2	1	1	1	1	1	1	1	2	3	3	3	3	3	3	3	2	2	1	0	0
Central Coast	2	2	2	2	2	2	1	1	1	1	2	3	3	3	3	3	3	3	2	2	3	0	0	0
West Vancouver Island	1	1	2	2	1	1	0	0	1	1	2	3	4	4	4	5	5	4	4	4	4	2	1	1
East Vancouver Island	1	1	2	2	2	2	1	1	2	2	3	4	4	4	4	5	5	4	4	4	4	3	2	2
Haida Gwaii	2	2	2	2	2	2	0	0	0	0	1	1	2	2	2	3	4	4	3	3	3	0	0	0

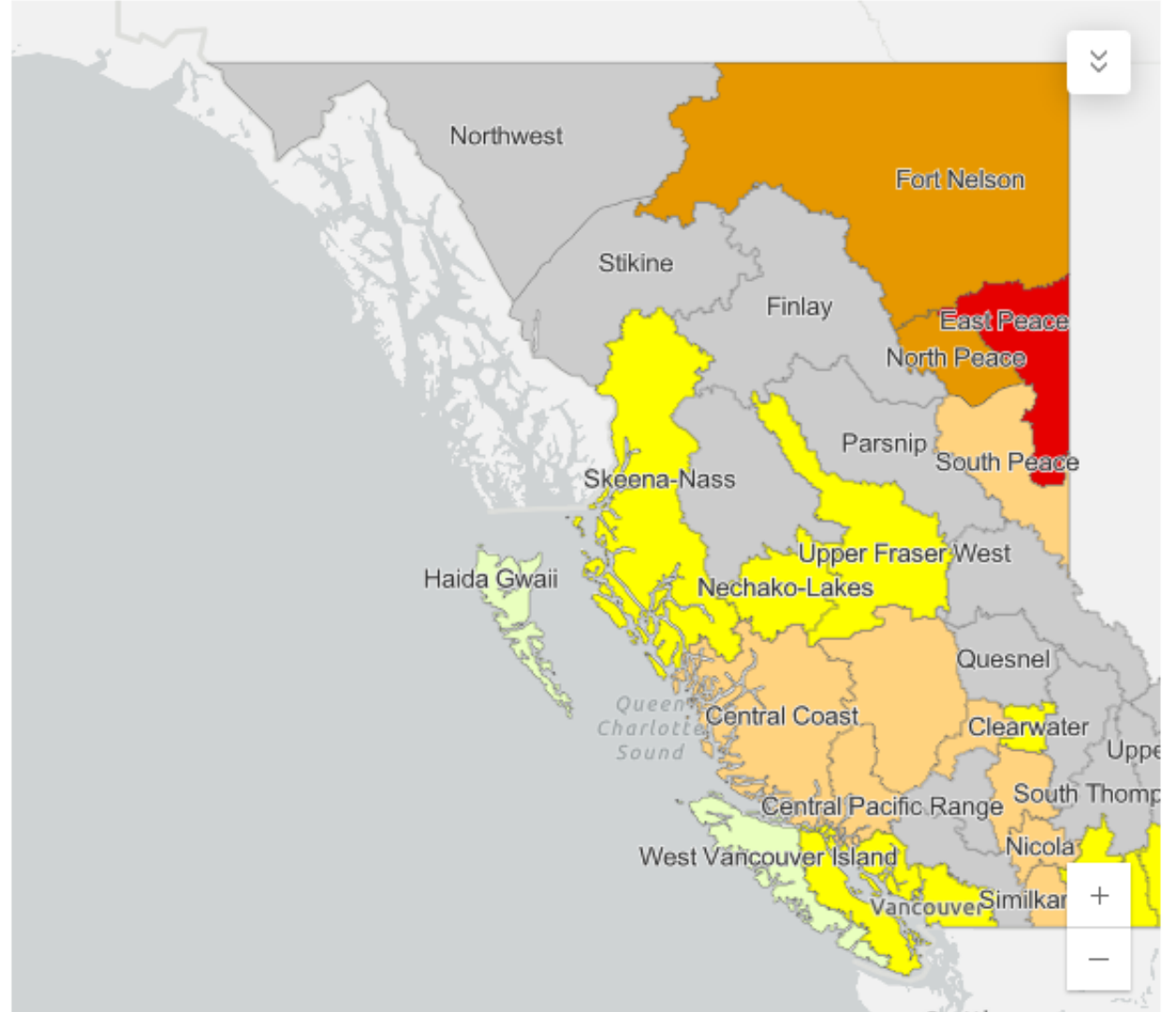
2025 Drought Outlook

- **Intermittent dugout filling from lack of snow melt**
- **Early freshet**
 - Snow in low elevation areas melted in April, some remaining in mountains
- **April 1st snowpack indicators suggest drought conditions may persist:**
 - Liard- 84% of normal (16% less than a normal year)
 - Peace- 75% of normal
- **Lack of spring precipitation**
- **We are preparing for an elevated risk of drought again**

British Columbia Provincial Drought Map



Drought Level 0	
Basin Count: 2	2.6% of Province (Area)
Drought Level 1	
Basin Count: 10	16.6% of Province (Area)
Drought Level 2	
Basin Count: 9	15% of Province (Area)
Drought Level 3	
Basin Count: 4	17.9% of Province (Area)
Drought Level 4	
Basin Count: 1	2.6% of Province (Area)
Drought Level 5	
Basin Count: 0	0% of Province (Area)



Esri, TomTom, Garmin, FAO, NOAA, USGS, EPA, NRCan, Parks Canada | GeoBC, Wat... Powered by Esri

Drought conditions as of: May 29, 2025

Drought and Water Management Actions

Mitigation

- Ongoing monitoring and analysis.
- Regulatory action on unauthorized water use.

Preparedness

- Early communications with licensees on water conservation.
- Track drinking water scarcity vulnerability.
- Monitor snowpack conditions.

Response

- Monitor local conditions. 2x/month
- BCER Suspension Directive
- Share information via Drought Portal and media.
- Temporary protection orders as a last resort.

Recovery

- Post-season review on lessons learned.
- Enhance tools for better situational awareness.
- Develop policy and planning to address short- and long-term impacts.

Working Together



Threats at top of mind

- Community Water Supply
- Power Production
- Livestock
- Aquatic ecosystem health



Shared responsibility

- Local, regional, Indigenous, provincial, federal governments.
- Water suppliers, water licensees.
- Public.
- Water conservation and risk assessment is the responsibility of all water users.



Provincial action

- Working with federal and First Nations partners to reduce risks to fish during drought.
- Early communications on actions water users can take to prepare for drought.
- Monitoring of conditions and impacts to inform risk.

Drought Impacts



Industry

- Loss of water for hydropower, oil and gas production, and wastewater treatment.
- Impacts on tourism, including for recreational activities.
- Impacts vegetation growth and timber supply.



Agriculture

- Loss of water for milking/livestock watering.
- Loss of water for forage irrigation.
- Loss of water for crop/food production.



Community

- Loss of water for drinking and sanitation.
- Increased concentration of contaminants.
- Loss of water supply for essential services (fire suppression, water supply system function, etc.).




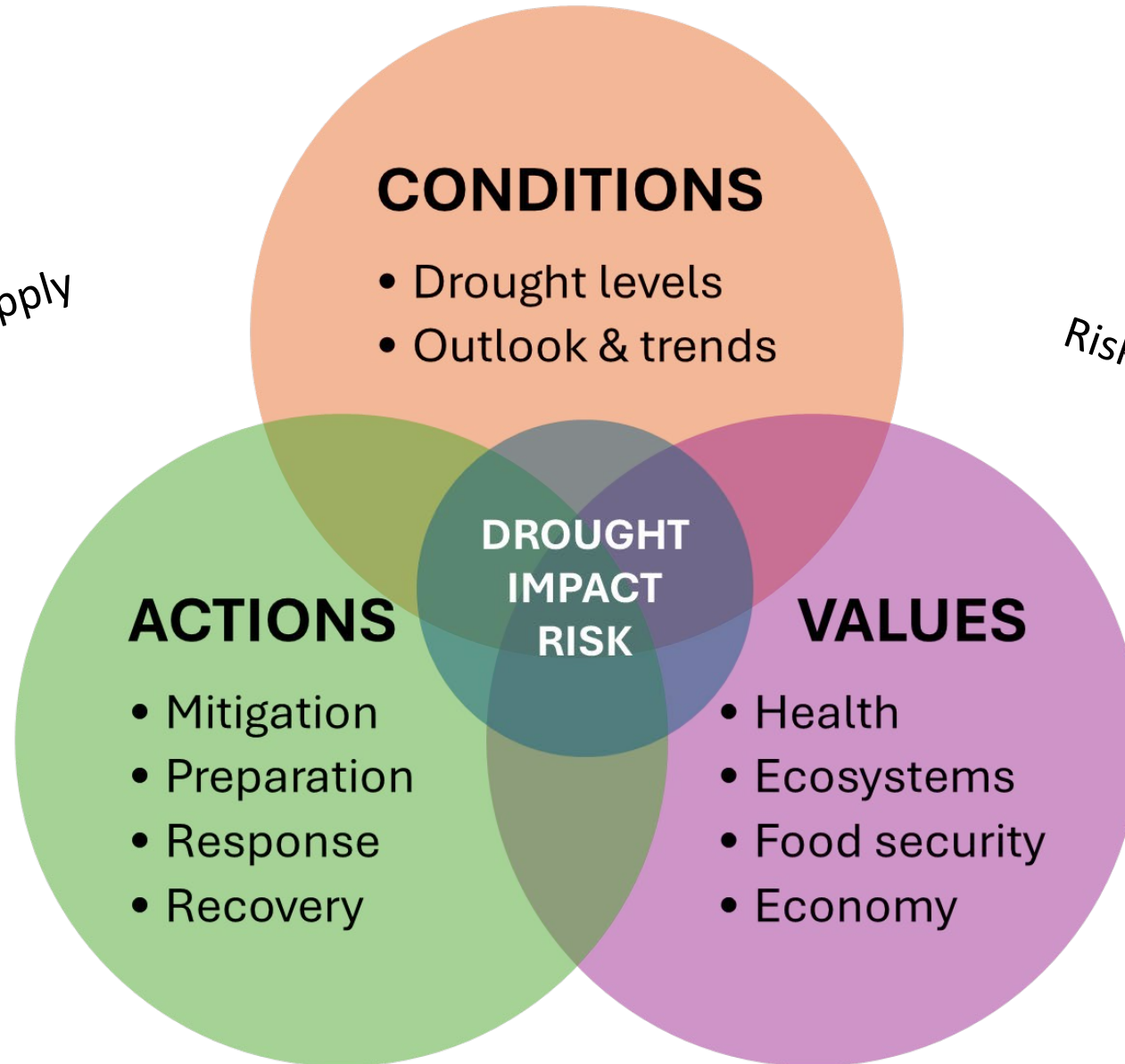
Environmental

- Loss of stream flows to support fish populations.
- Loss of water to support healthy ecosystem function.
- Loss of water supply to meet First Nations cultural needs.

Drought Monitoring


Risk to drinking water supply


Risk to fish population survival



Thank You!

gov.bc.ca/drought

droughtportal.gov.bc.ca

