


Flood, Snow and Drought

NE Roundtable

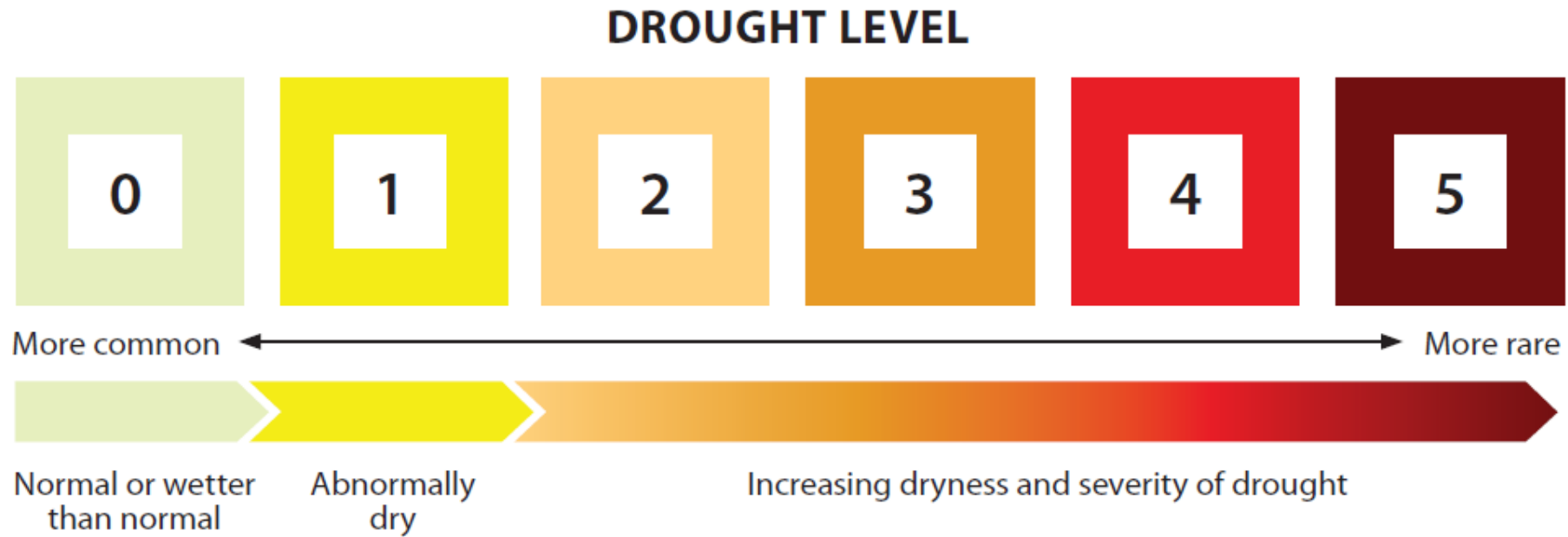
May 6, 2026



Liia Schilds P.Ag
Senior Water Authorization Specialist
Permitting Transformation Division- Northeast



Drought Levels Reframed for 2025



- Tells us **how dry** it is, relative to the historical record.
- Tells us **how likely** we are to see these conditions.
 - E.g. Drought Level 5 has a greater than 50-year return period.
- Measures conditions at a **point in time**.
- Helps us understand the **natural pattern** of drought conditions.


2025 DROUGHT LEVELS AT A GLANCE

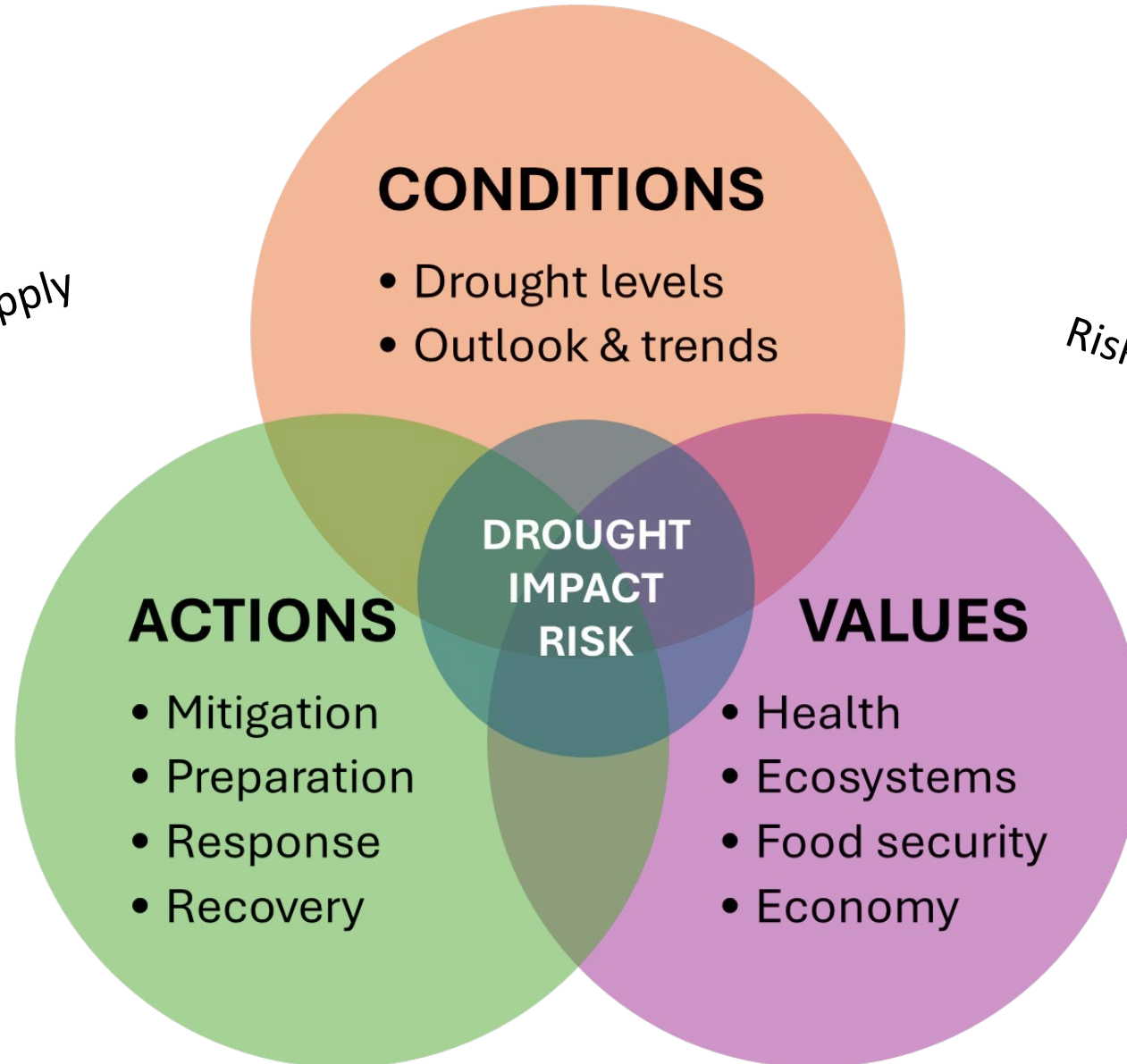
Drought Levels: **0** **1** **2** **3** **4** **5** * Not updated outside of core drought season

BASINS	15-May	22-May	29-May	5-Jun	12-Jun	19-Jun	26-Jun	3-Jul	10-Jul	17-Jul	24-Jul	31-Jul	7-Aug	14-Aug	21-Aug	28-Aug	4-Sep	11-Sep	18-Sep	25-Sep	2-Oct	9-Oct	16-Oct	23-Oct	30-Oct
Fort Nelson	3	3	3	3	4	3	5	5	2	1	2	1	1	1	1	1	1	1	1	1	2	2	2	2	1
East Peace	4	4	4	4	4	3	3	3	2	3	3	3	3	3	3	3	3	3	3	3	4	4	4	4	4
North Peace	3	3	3	3	4	1	0	0	0	1	1	0	0	0	0	1	1	1	1	3	2	2	1	1	2
South Peace	*	2	2	2	3	3	3	3	3	3	2	2	2	2	1	1	1	2	3	3	2	1	1	2	2
Neelum	*	*	*	0	2	2	1	1	0	0	0	0	0	0	0	0	0	1	1	1	1	1	1	1	1
Stikine	*	*	*	0	2	2	1	0	0	0	0	0	1	0	0	0	0	0	1	1	2	1	0	0	0
Skeena-Nass	*	*	1	0	0	2	0	1	1	0	0	1	2	0	0	0	1	3	2	0	0	0	1	1	0
Skeena-Bulkley	*	*	*	1	2	2	2	2	2	2	1	2	2	2	1	1	2	2	1	1	0	0	1	2	2
Nechako-Lakes	*	1	1	1	2	2	2	3	3	3	3	3	3	2	2	2	2	3	2	2	2	2	3	3	3
Finlay	*	*	*	0	2	2	0	0	0	0	0	0	0	0	0	0	0	1	0	0	0	0	0	0	0
Parsnip	*	*	*	0	2	1	1	2	1	0	0	0	0	0	0	0	0	2	2	1	0	0	0	0	0
Upper Fraser West	*	1	1	1	1	1	1	2	2	1	1	2	2	2	1	1	2	2	2	2	2	2	2	2	2
Upper Fraser East	*	*	*	0	1	1	1	2	2	1	1	1	1	0	0	0	1	2	2	2	1	0	0	0	0
Upper Columbia	*	*	*	0	0	1	1	2	2	2	1	1	0	0	0	0	0	0	0	0	1	1	2	3	3
Upper Arrow Lakes	*	*	*	0	1	1	2	2	2	2	2	2	2	2	0	1	1	1	2	3	4	3	3	3	3
Kootenay River	*	*	*	0	3	3	4	3	3	3	2	1	2	1	1	3	3	3	3	3	3	3	2	3	3
Elk-Flathead Valleys	*	*	3	1	4	5	4	2	2	2	0	0	0	0	1	2	2	2	2	1	2	2	2	3	3
Creston	*	*	3	2	2	3	3	3	3	4	3	2	2	2	3	4	4	4	4	4	4	4	3	3	3
Kootenay Lake-West Arm	*	*	2	0	2	3	3	3	3	3	2	2	2	1	0	1	2	3	3	3	3	3	3	3	4
Slocan-Lower Columbia	*	*	1	0	2	2	3	2	3	4	4	3	2	2	1	2	2	3	3	3	4	4	4	4	4
Kettle River	*	*	1	0	2	2	2	2	3	3	3	2	2	1	1	1	2	2	2	3	3	3	3	3	2
Clearwater	*	2	1	2	3	3	3	2	3	2	2	1	2	1	1	1	2	2	2	3	3	3	2	1	2
South Cariboo	*	2	2	1	3	3	1	1	2	2	0	0	1	1	2	3	3	3	3	3	3	2	1	1	1
Quesnel	*	*	*	0	1	0	1	1	1	1	0	0	1	0	0	0	2	2	3	3	2	0	0	1	1
Chilcotin	*	1	2	1	2	1	2	1	2	2	2	2	2	2	2	3	3	3	2	2	2	1	1	2	2
Lower Thompson	*	2	2	2	3	2	2	2	2	2	1	1	1	0	0	0	1	1	2	2	2	2	1	2	1
North Thompson	*	*	*	0	1	1	2	2	2	2	1	1	1	1	0	0	1	2	2	3	3	2	2	2	2
South Thompson	*	*	*	0	1	1	1	1	2	1	1	1	1	0	0	0	1	1	2	2	3	2	2	2	2
Bridge	*	*	*	0	1	1	2	2	2	1	2	2	2	2	2	3	2	1	2	2	0	0	0	2	1
Nicola	*	1	2	2	2	1	2	2	3	3	3	3	3	3	3	3	3	3	3	4	4	3	3	3	2
Okanagan	*	1	1	1	2	2	2	2	3	3	2	1	1	1	0	1	2	3	3	3	3	4	3	3	2
Similkameen	*	1	2	2	2	3	3	3	3	4	4	4	4	4	4	4	4	4	4	4	4	4	4	3	2
Central Pacific Range	*	*	2	0	1	2	2	2	3	3	2	2	2	3	1	2	2	1	1	2	1	0	1	2	0
Eastern Pacific Range	*	*	*	0	0	1	1	2	2	2	2	2	2	2	1	3	3	2	3	2	2	0	1	2	0
Sunshine Coast	2	1	1	1	1	1	1	2	2	0	2	2	2	1	0	1	1	2	2	1	0	0	0	0	0
Lower Mainland	2	1	1	1	1	1	1	2	2	0	2	2	2	1	0	1	1	1	1	1	1	0	0	0	0
Central Coast	*	*	2	1	0	2	2	2	2	0	1	2	3	3	0	1	1	2	1	0	0	0	1	2	0
West Vancouver Island	3	2	0	1	1	1	2	2	2	2	2	2	3	3	0	0	1	2	1	1	0	0	1	1	0
East Vancouver Island	3	2	1	1	1	1	1	2	2	2	2	3	3	3	0	1	2	2	2	2	0	0	0	1	0
Halda Gwaii	1	0	0	0	0	0	1	0	0	0	0	0	0	0	0	0	0	0	0	0	0	0	1	1	0

Drought Monitoring


Risk to drinking water supply


Risk to fish population survival



Regional Technical Drought Working Groups



Established for a natural resource region and any appropriate watersheds



Technical staff from provincial, federal, local, First Nations



Share information on drought conditions and impacts



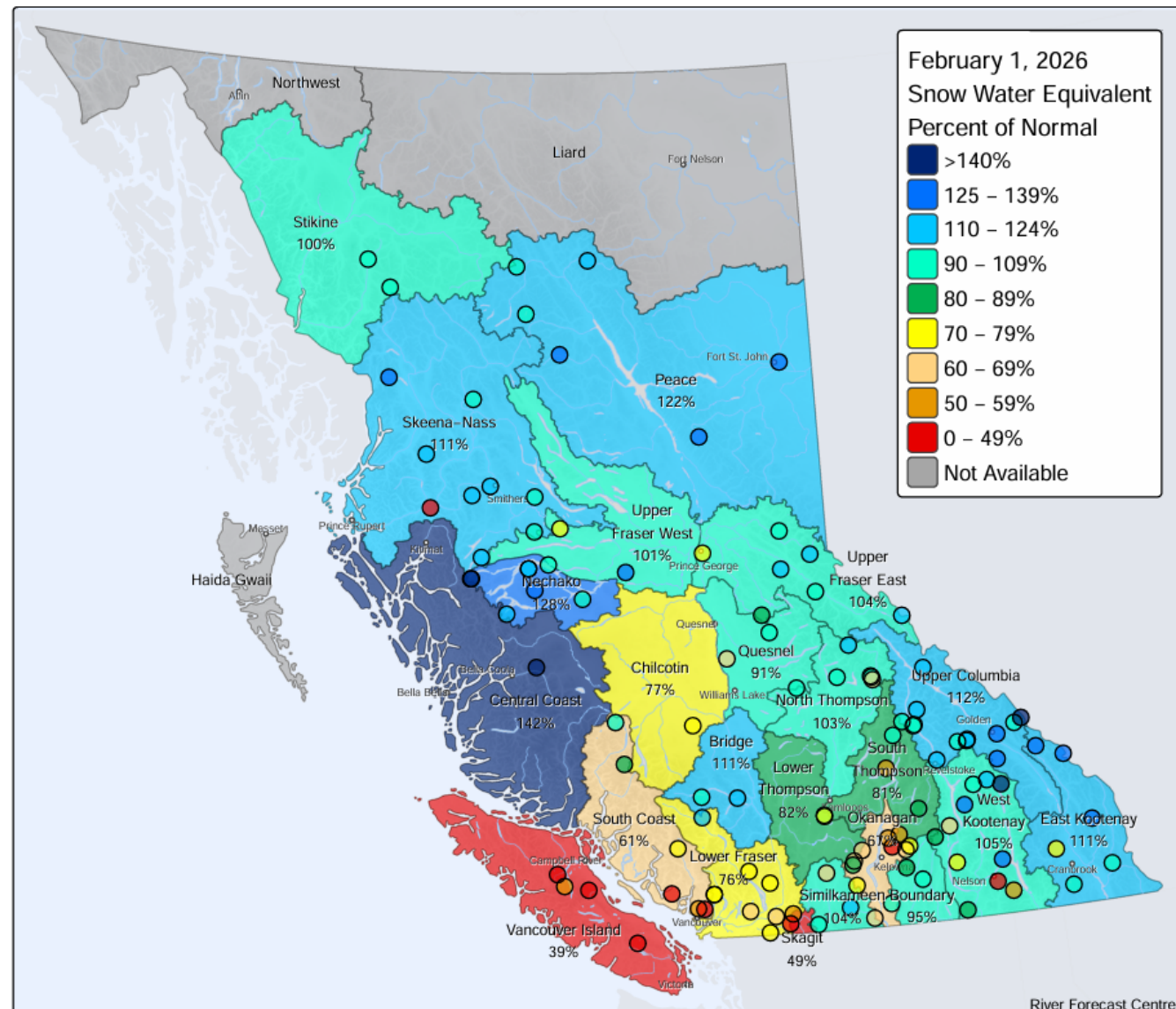
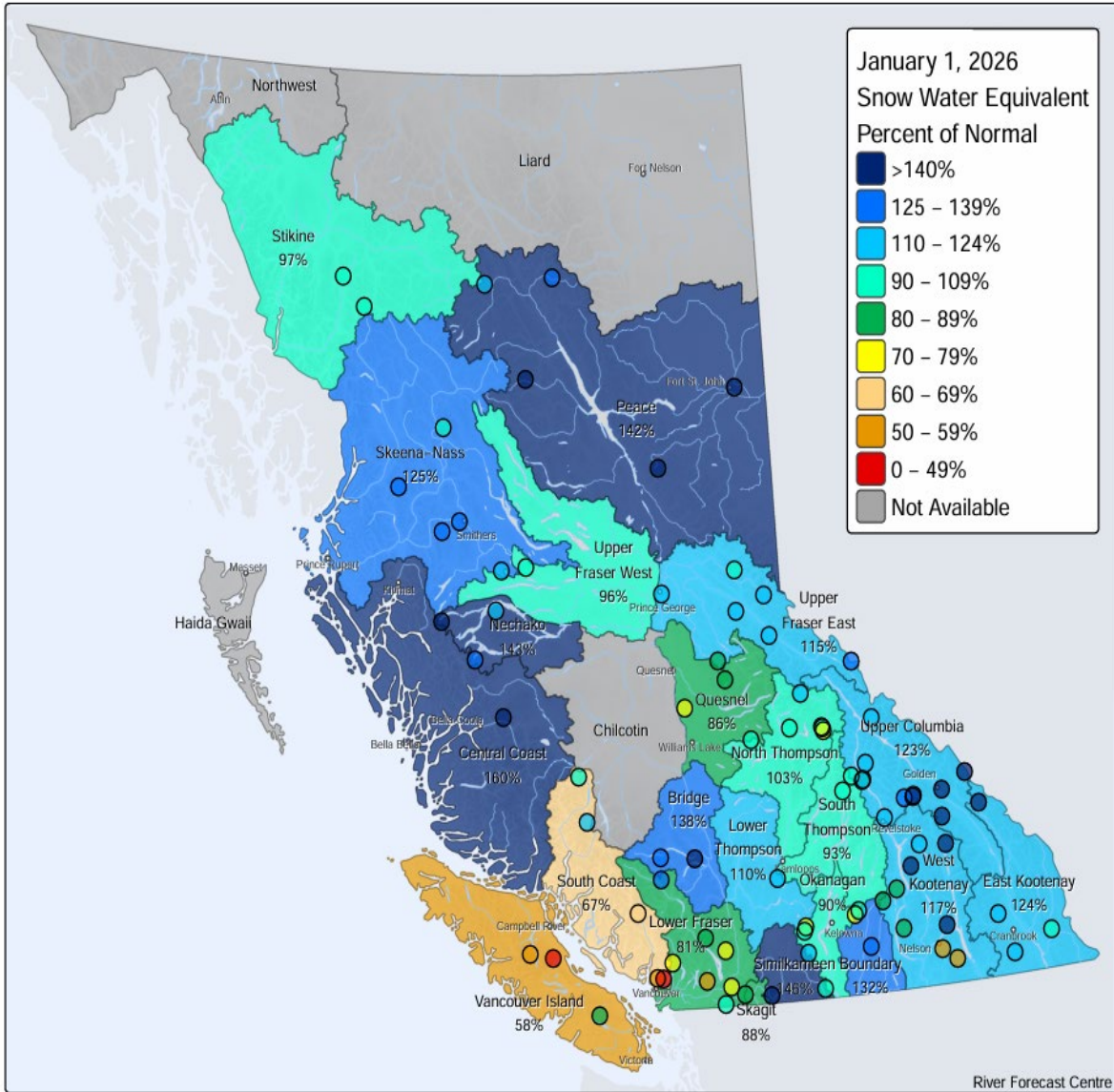
Discuss regional or basin drought levels



Coordinate regional projects to support data collection, monitoring, risk assessments

- Meet once a week
- NE Invite list expanded in 2024 to additional partner agencies
- Monitor streamflow

Snow Survey Data



B.C. Snow Station Map - Percent of Normal

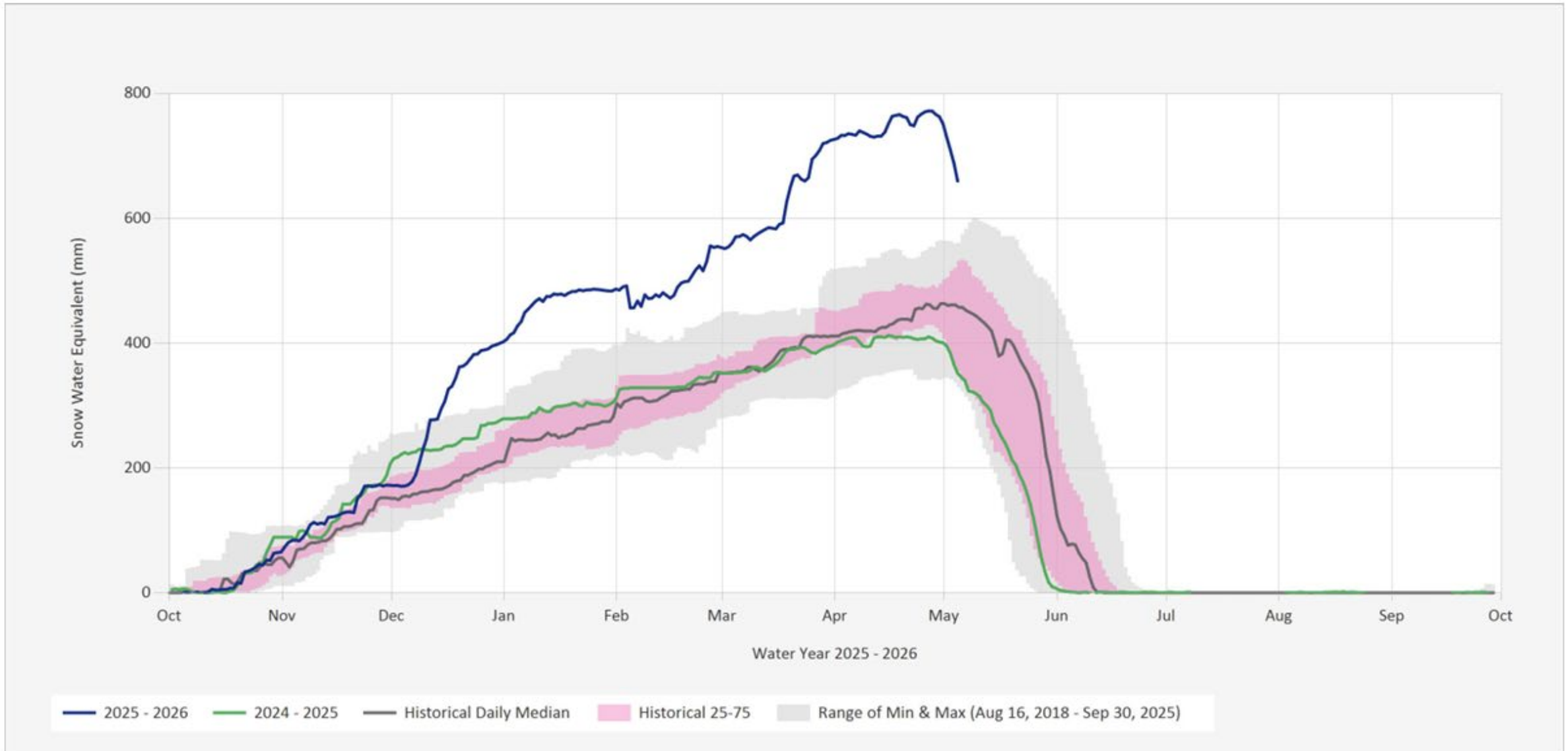
B.C. Snow Station Map - Percent of Normal

Automated Snow Weather Station Graph

Snow.4A20P.Automated Snow Weather Station Graph

Source Data: SW.Daily@4A20P

Location: Monkman Creek, Latitude: 54.7252806, Longitude: -121.2316972, Elevation: : 1570 m



Current Flood Notifications

BRITISH COLUMBIA Flood Warning and Advisory Notifications

Find address or place

About

Flood Warning and Advisory Notifications

Welcome to the Flood Warning and Advisory Notification map. This map represents flood advisory and warning notifications as updated by the [River Forecast Centre](#) for the Province of British Columbia.

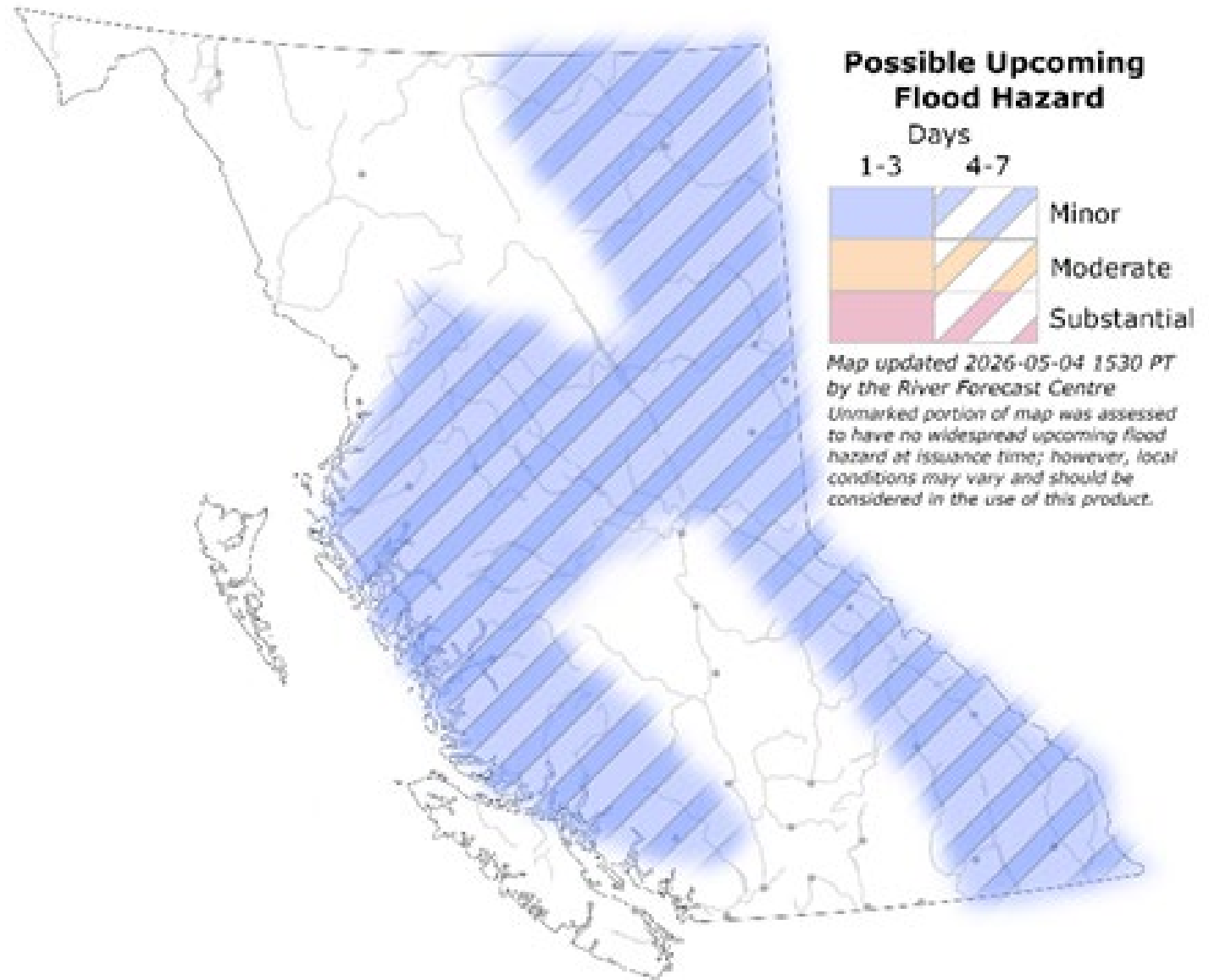
This map includes the following layers:

1. Flood Notifications: Major Basins
2. Flood Notifications: Sub-Basins

Advisory and Warning Levels (Viewable when active):

1. **High Streamflow Advisory**: River levels are rising or expected to rise rapidly, but that no major flooding is expected. Minor flooding in low-lying areas is possible.
2. **Flood Watch**: River levels are rising and will approach or may exceed bankfull. Flooding of areas adjacent to affected rivers may occur.
3. **Flood Warning**: River levels have exceeded bankfull or will exceed bankfull imminently, and that flooding of areas adjacent to the rivers affected will result.

7-day Flood Model



Seven-Day Streamflow for KISKATINAW RIVER NEAR FARMINGTON (07FD001)

*Graph statistics based on historic data (1944 to 2024), data after this is provisional and subject to change; latest values below are based on all years and may not align precisely with historic statistics.

Latest Value = 31.746 cms on May 4, 2026

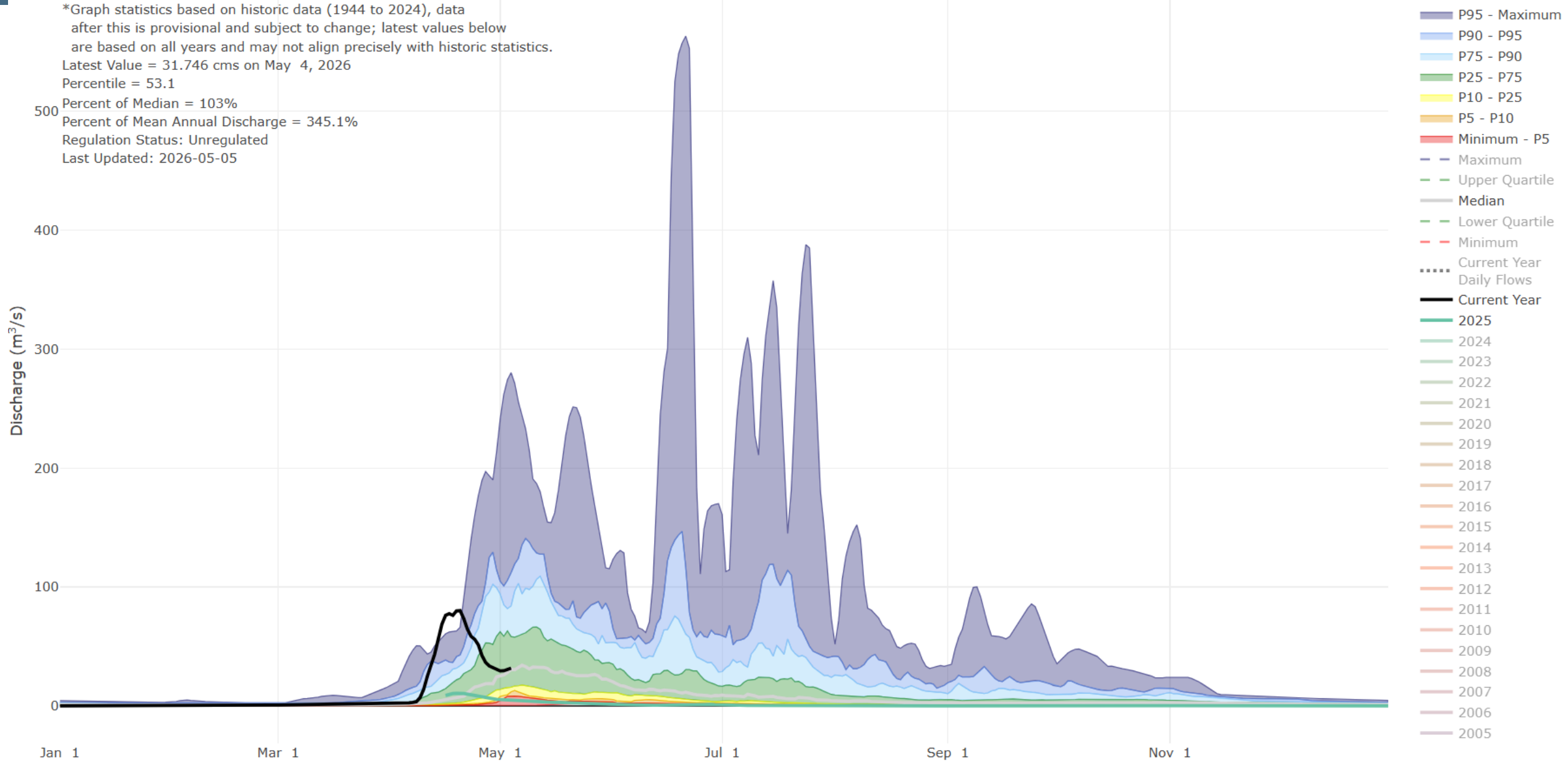
Percentile = 53.1

Percent of Median = 103%

Percent of Mean Annual Discharge = 345.1%

Regulation Status: Unregulated

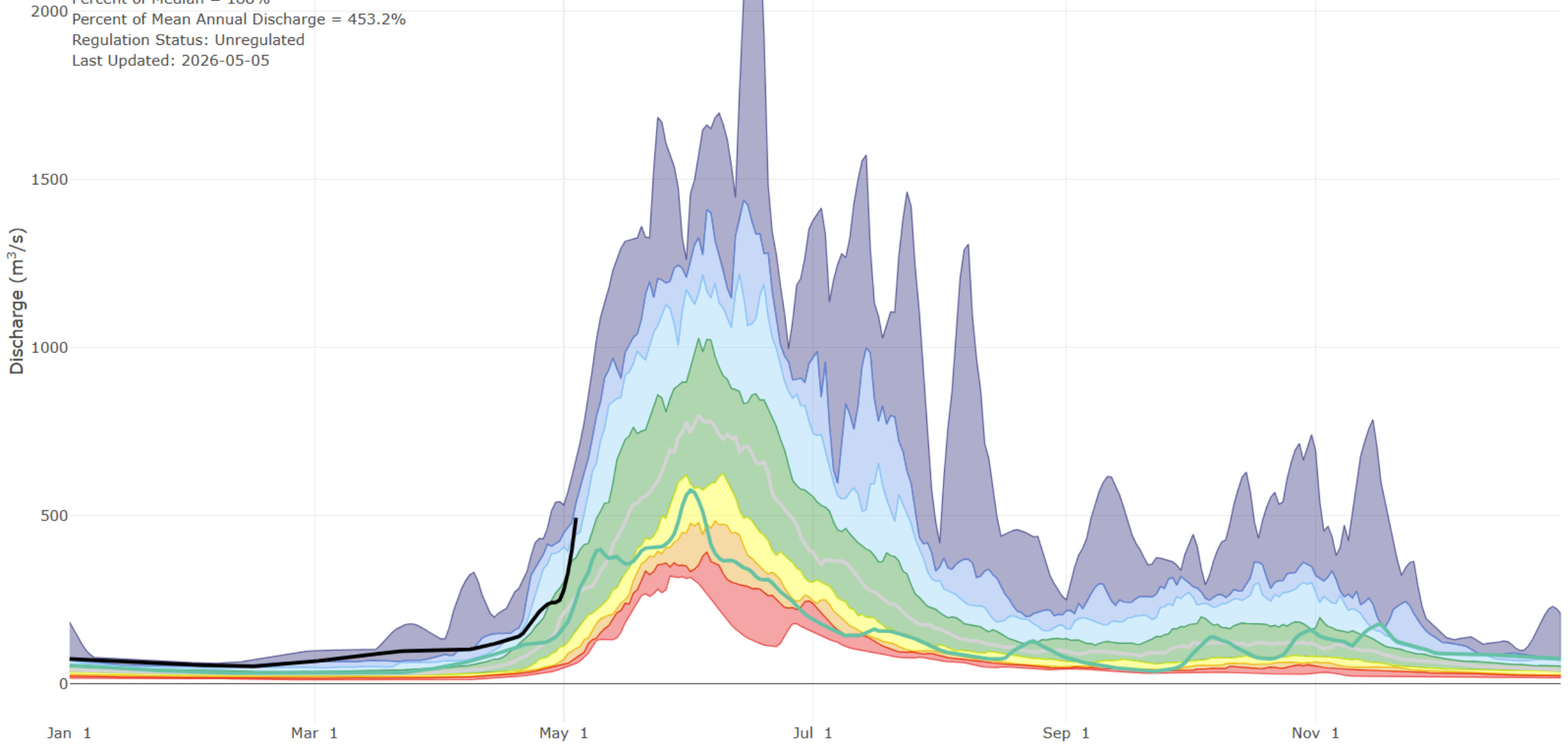
Last Updated: 2026-05-05



Seven-Day Streamflow for PINE RIVER AT EAST PINE (07FB001)

*Graph statistics based on historic data (1961 to 2024), data after this is provisional and subject to change; latest values below are based on all years and may not align precisely with historic statistics.

Latest Value = 493.849 cms on May 4, 2026
Percentile = 92.3
Percent of Median = 188%
Percent of Mean Annual Discharge = 453.2%
Regulation Status: Unregulated
Last Updated: 2026-05-05



2025 Water Abundance Outlook

- Reports of full dugouts from snow melt
- Early freshet in low elevations
- Ongoing freshet in high elevations
- April 1st snowpack indicators suggest reduced early season drought:
 - Liard- 111% of normal (11% more than a normal year)
 - Peace- 136% of normal
- **We are monitoring early season flooding, preparing for rain on snow events in June and encouraging water storage now to be prepared for late summer**

Thank You!

