

Presentation to:
Northeast Roundtable

by:

Ministry of Indigenous Relations and Reconciliation



Northeast Land Transfers

May 6, 2026

Why We're Here Today

- **Purpose**
 - Share Information
 - Listen to concerns
 - Talk about next steps
- **Today:**
 - Review land transfers for Treaty Land Entitlement (TLE) and Site C Land Agreements
 - Update status of Land Transfers:
 - Transferred
 - Transferring soon
 - Upcoming/ priorities for transfer
- **Engagement updates**

Land Transfer Context

Selected from Crown lands

Treaty Land Entitlement

(Historic Treaty Settlement)

Canada, BC and First Nation

- TLE Settlement and Lands Agreements (Signed Feb. 2023)
- Making up for land owed over 100 years under Treaty 8 (*missed at the time of Treaty*)
- Land transfers to Canada and in fee simple
- First Nations
 - West Moberly & Halfway River
 - Blueberry River & Doig River
 - Saulneau First Nations

Site C Tripartite Land Agreements

(Accommodation for project impacts)

BC Hydro, BC and First Nation

- Lands to *accommodate for adverse impacts of the Site C project* to Treaty 8 rights.
- Land transfers in fee simple (as private land);
 - First Nations may apply to have some lands added to existing reserve land.
- First Nations (*with signed agreements*)
 - Halfway River, McLeod Lake, Saulneau, Doig River, Prophet River, and West Moberly

TLE Context - Background

- Why transferring TLE lands matters:
 - Fulfills long-standing Treaty 8 land promises,
 - Resolves an overdue land obligation owed by Canada and the Province and settles TLE claim
 - Moves reconciliation from words to action – land is tangible demonstration of reconciliation
 - Provides land for cultural, community, and economic use
 - Marks the first expansion of Treaty 8 reserve lands in decades.

TLE Context - Background

TLE Shortfall Land

A historic land debt

- Owed since the treaty was signed
- Land will be transferred directly to Canada for Reserve creation (ATR)

TLE Additional Land

For reconciliation

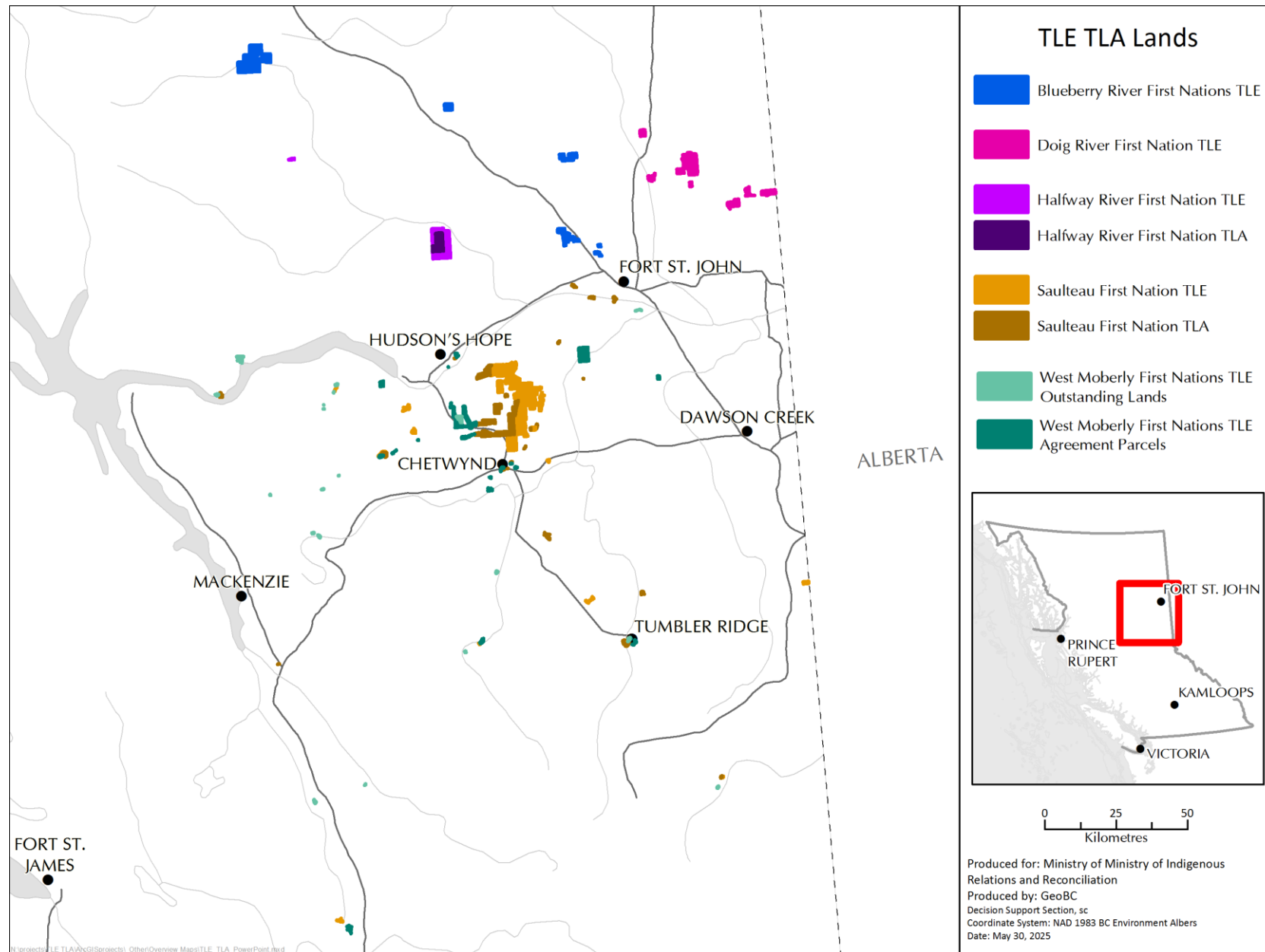
- Land will be purchased by the First Nations

2 Categories of Additional Lands:

- Fee Simple
- Transfer to Canada as Reserve (ATR)

*ATR = Addition to Reserve (Federal process to add land as Indian Reserve)

TLE & TLA Land Transfers Overview



Parcels have a buffer (so they will be visible) and appear larger than actual size

Our Commitment to Engagement

- What you can expect from the Province
 - Clear updates about land status changes
 - Ongoing engagement, including on new parcels
 - Case-by-case discussions where there are specific concerns on new selections
 - Public information available online

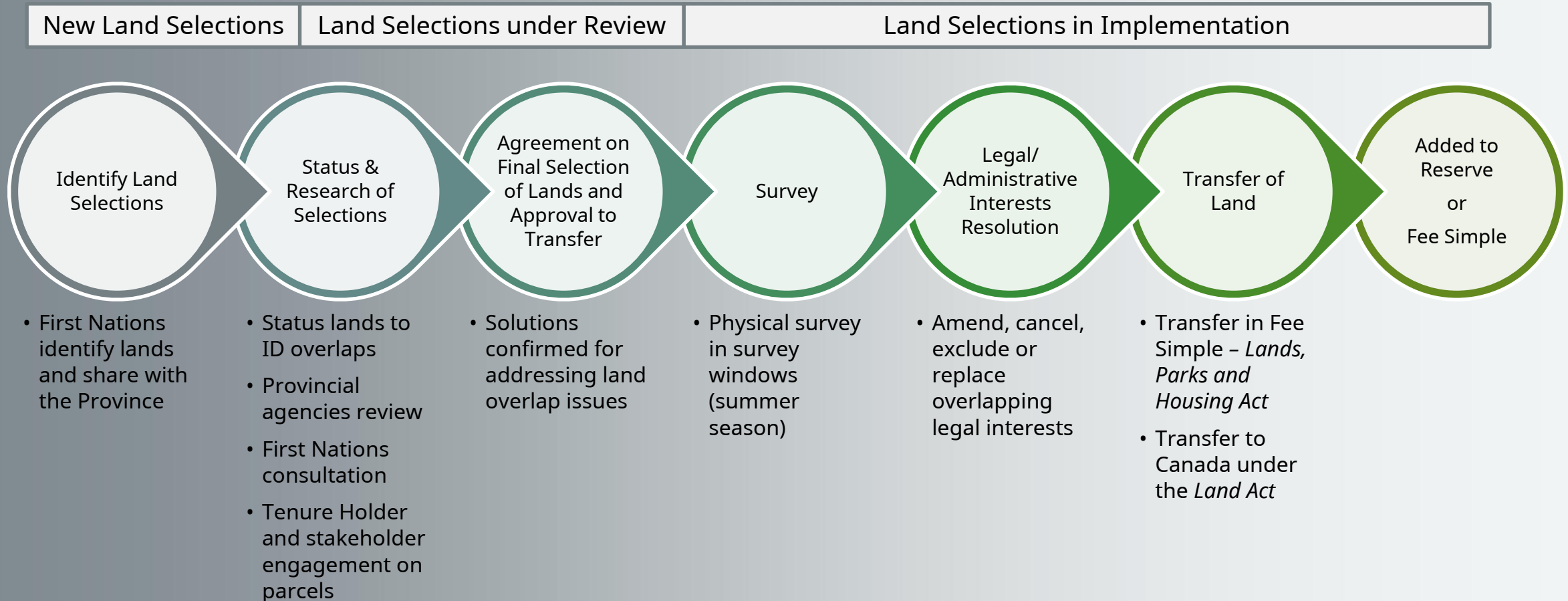


Engagement to Date

- During negotiations, prior to finalization of TLE Agreements:
 - Engaged and presented parcels from 2017 – 2021
 - Opportunities to share comments, concerns, potential impacts
 - In writing (comment forms, email, letters)
 - Local government
 - Northeast Roundtable
 - Focused meetings with interest groups
 - Open Houses
 - Shared the What We Heard Report as part of closing engagement on parcels
 - Shared stakeholder comments with decision makers
- Updates on implementation:
 - Consistent updates at NE Roundtable meetings and update to PRRD in July 2023
- Engagement on New Selections:
 - Initiated engagement on the first package of Outstanding Lands on June 3, 2025



Land Transfer Process



Land Transfers Status

First Nation	Signed Agreement	Process Stage
BRFN	TLE	Implementation
DRFN	TLE	Implementation
	Site C TLA	Land selections to be identified
HRFN	TLE Site C TLA	Implementation
WMFN	TLE	Implementation Phase 1 Outstanding Lands Land selections to be identified (remaining unselected portion of quantum)
	Site C TLA	Land selections to be identified
SFN	TLE Site C TLA	Finalizing provincial parcel review and stakeholder engagement
PRFN	Site C TLA	Land selection discussions underway
MLIB	Site C TLA	Land selection discussions underway

Note: the lengthy land transfer process means that parcels are sequenced and will transfer at different times.

Transferred / Up Next

Blueberry River

- Charlie Lake 1 (TLE Shortfall) – transferred
- Charlie Lake 2 (TLE Shortfall) – transferred
- Red Creek 2a & 2b – upcoming

Doig River

- KTP 1, 2, 3 (TLE Shortfall) – transferred
- Broomfield (TLE Shortfall) – transferred
- MyGosh West (TLE Shortfall) – transferred
- MyGosh East, Doig South and Doig East-South (Fee Simple Additional) – upcoming

Halfway River

- Tsaa Nuna 3 (TLE Shortfall) – transferred
- Tsaa Nuna 3 (Site C TLA fee simple lands) – transferred
- Chowade (TLE Shortfall) – upcoming

West Moberly

- Summit Lake 1 & 5 (TLE Fee Simple Additional Lands) – transferred
- Moberly Lake Golf Course (TLE Fee Simple Additional Lands) – transferred
- Moberly Lake South Shore – transferred
- Hudson's Hope South (school) & Moberly Lake North Shore (ATR Additional) – upcoming

Upcoming Parcels- Next focus for implementation priority

Blueberry River First Nations

- Red Creek 1 (Shortfall)
- IR 205 South (Fee Simple Additional)

Doig River First Nation

- Doig East North (Fee Simple Additional)
- Doig West (Fee Simple Additional)
- Big Camp (Fee Simple Additional)
- Doig Northwest (ATR Additional)

Halfway River First Nation

- Tsaa Nuna 2 TLE (Fee Simple Additional)

West Moberly First Nations

- Summit Lake 2, 3, 4 (Fee Simple Additional)
- 2nd & 3rd Cabin (ATR Additional)
- Chetwynd East, Chetwynd West, and Chetwynd Southwest
- Stewart Lake North Shortfall + Stewart Lake North (ATR Additional)
- Cameron Lakes

Saulteau First Nations

- Moberly Lake Reserve Expansion 2-7 (Site CTLA Fee Simple)

Engagement Next Steps



West Moberly (Upcoming)

Outstanding Lands Open Houses:

- Tumbler Ridge (June – TBD)
- Chetwynd (June – TBD)

Online Comment Period Closes June 30, 2026



Blueberry River TLE (Future)

Halfway River Trail (engagement is coming – no current timeframe – TBD)



Ongoing Parcel Updates

Implementation Steps

NE Land Transfers govTogether:

<https://engage.gov.bc.ca/govtogetherbc/engagement/land-transfers-in-northeast-bc/>

Email: mirr.northeast@gov.bc.ca